



**Nominees for 2016-2017 Board Announced
by Nomination Committee**

The SEAOSC membership will be asked to vote in May for the nominees for incoming board of directors. Voting members are defined in the SEAOSC Bylaws Article II Membership and include the categories of "Member SE" and "Member". Other membership categories are not eligible to vote in association elections.

The SEAOSC Nominating Committee, chaired by Senior Past President Doug Thompson, has announced the following slate of nominations for the 2016-2017 Board of Directors:

Treasurer: *Mehran Pourzanjani, SE*

Directors:

- *Matt Barnard, SE*
- *Sandra Biddulph, SE*
- *Josh Gebelien, SE*
- *Jackie Vinkler, SE*

Officers for 2016-2017, according to succession procedure, will be Jeff Ellis, S.E., President, and Robert Lyons, S.E., President-Elect. Michelle Kam-Biron, S.E. will continue to serve on the board of directors as the Immediate Past President. Also continuing on the board of directors will be Lorena Arce, P.E., Todd Brown, S.E., Jeffrey Haight, S.E., and Victoria Wigle, S.E. Additional nominations for the office of President-Elect, Treasurer or Director were called for at the **March 2nd** dinner meeting in accordance with procedures outlined in the SEAOSC Bylaws Article VI, Section 2. No additional nominations were received from the membership.

Voting will begin in early May 2016 by Constant Contact email announcement and reply. Election results will be announced at the June 1st, 2016 dinner meeting. The newly elected directors will take office July 1, 2016 for a two-year term.

Thank you to the following members of the Nominations Committee who selected nominees in accordance with procedures outlined in the Bylaws Article VI, Section 1:

- *Jeff Ellis*
- *Colin Kumabe*
- *Tom Harris*
- *Robert Lyons*
- *Diana Nishi*
- *Kevin O'Connell*
- *Doug Thompson*
- *Ryan Smith*

The SEAOSC Bylaws are posted [here](#).

- 1 Nominations
- 2 President's Letter
- 4 Board Nominee Biographies
- 5 Our Board Members - Up Close!
- 6 March New Members
- 7 2016 EISE Awards
- 8 Capitol Hearing on SB 885
- 9 Announcements!
- 10 2016 MAE Recap
- 11 Events

SAVE THE DATE!

MAY

- 2 Webinar: *An Overview of ACI 318 Anchorage Design*
- 4 LA Dinner Meeting
Luminarias, Monterey Park
- 9 Webinar: *Building Codes and Post-Installed Anchors*
- 16 Webinar: *Steel Deck Diaphragm Attachment*
- 20 & 21 Spring Education Event
Long Beach, CA
- 24 Tri County Dinner Meeting

JUNE

- 1 EISE Awards & President's Dinner Meeting
Luminarias, Monterey Park
- 11 SAP Training



Michelle Kam-Biron, PE, SE, SECB

Partnership...an association of two or more people as partners. An arrangement where parties, known as partners, agree to cooperate to advance their mutual interests. What does this mean to SEAOSC? In past newsletters I've mentioned the need for SEAOSC to develop partnerships with others who have mutual interests so that together we can have a bigger impact on our community. One potential partnership is with building officials. We work with building officials regularly and with a common interest to provide a safe built environment it makes sense that we would want to form a partnership to advance the structural engineering field but also towards creating a resilient community. What better way to connect and build partnerships than by hosting a panel discussion featuring building officials at the [April 6th Dinner meeting](#). Carrying on the tradition of having the President-elect moderate, Jeff Ellis led the discussion that included Colin Kumabe, SE – City of Los Angeles Department of Building and Safety, David Khorram, P.E. - City of Long Beach Department of Development Services, Douglas Humphrey, AIA - Division of the State Architect and Roy Lobo, S.E. - Office of Statewide Health Planning and Development. It was a triumph with over a hundred people in attendance, who listened to candid discussions about the adoption and enforcement of the new 2016 CBC, hear about the current plan check process and advice on best practices. It was very refreshing to hear these topics from the building official point of view.

As you know, we retained a new multidiscipline executive management company last year to enhance and expand SEAOSC operations. Recently, BSC Management has decided to end the agreement with SEAOSC and we are once again in search a multidiscipline executive management company to serve SEAOSC next year. We've assembled an Association Management Search Ad Hoc Committee to champion this effort. President-Elect Jeff Ellis will Chair this committee of a few past-Presidents and past Board of Directors. If you know of any Association Management companies which you feel might be a good match and may be interested in providing management services for SEAOSC, please contact President-Elect Jeff Ellis at (714) 738-2029 or jellis@strongtie.com.

Once SEAOSC signs on a new management company, our current management company and the new company will begin the transition process to ensure everything runs smoothly. We are optimistic that we'll find a great company which will be able to work with SEAOSC well and help us reach the next level.

In the [April SEAOSC newsletter](#), I mentioned a gathering of **Women in SEAOSC** that was going to occur on March 30th that featured Annie Kao presenting, "Effective communication tips to elevate your conversations with clients and colleagues". The event was organized by Victoria Wigle, Annie Kao, Lorena Arce, Kirsten Zeydel and I with lunch was provided by KPFF in LA. The event was a HUGE hit with almost thirty women participating. During the meeting, I mentioned that I had never been in a room with that many women engineers before which on one hand sad but on the other very encouraging.



*Women in SEAOSC lunch seminar
Photo by Kirsten Zeydel*

Upcoming SEAOSC events were announced as well as the need for member participation on the Education, Membership and newly formed Sustainable Design Committees. Annie did a fantastic job with her presentation about improving ones communication skills and the women seemed very interested in the topic as well as being able to network with other women engineers. We will definitely continue to try to organize more events in the future so if you are interested in participating or hosting a lunch or perhaps a cocktail hour before a SEAOSC meeting to support **Women in SEAOSC**, please contact me.



Mayor Garcetti's Seismic Retrofit Resource Fair



Left to right: Mario Cardona, Jeff Ellis, Michelle Kam-Biron, Melissa Sanchez, and Husan Ghanim

Fortunately, SEAOSC was at the forefront of the planning effort and we were able to provide Marissa with valuable SEAOSC resources to make the event a success. With the outreach assistance to the SEAOSC membership, the event had over sixty five table top exhibits of companies that specialize in seismic retrofit. Looking around the room, it was like a who's who of SEAOSC members.

operated the SEAOSC tabletop exhibit. During the event IPR engaged in a lot of meaningful conversations with the building owners who were unclear about what to do. Many building owners complimented the IPR members for being at the event and providing valuable resources.



Annie Kao



Ken O'Dell

On the topic of the LA retrofit ordinance, as mentioned previously, the Seismology and Existing Buildings Committee are currently creating design examples for the non-ductile concrete buildings and existing wood-frame buildings with soft, weak or open front walls which are being reviewed not only internally but also LADBS is reviewing it for compliance with the ordinance. In addition to providing educational resources on the design examples, the Board has been discussing the possibility of providing resources related to the seismic retrofit scope of the ordinance.

SEAOSC was also able to get two of the five speaker spots at the event. Representing SEAOSC was Annie Kao who presented "How to Partner with Structural Engineers for Safer Buildings" and Ken O'Dell who presented "PML Overview". Both topics were a hit with the large audience of building owners. In addition to informing the audience about structural engineers, Annie's presentation highlighted the SEAOSC website and "Find An Engineer" search webpage as well as directed the audience to a nearby SEAOSC tabletop exhibit that was staffed with volunteers from our Image and PR Committee.

Have you submitted a nomination for the **Excellence in Structural Engineering Awards**? We know that everyone is extremely busy but this is a chance to really celebrate what structural engineers do and what better way to celebrate our coolness than through showcasing the projects that structural engineers design. **Deadline for submissions is 5:00 pm, April 29, 2016**

The SEAOSC Image and PR (IPR) committee has been very active with outreach on behalf of SEAOSC. They have represented SEAOSC at last year's American Red Cross event, the ICC Annual Conference and most recently at the Seismic Retrofit Resource Fair. They also created a beautiful [SEAOSC brochure](#) in record time, helped coordinate the speakers/topics, and organized and

For those of you that have read my previous messages (all 2 of you J) this is a repeat from the April newsletter. . .just because it's a [quirky video](#) that for some reason, reminds me of engineers. . . wait for it. . .till about 3:10 and then he perseveres! I dare you to listen without smiling.

Have an Extraordinary Day and [Never Give Up!](#)

Michelle Kam-Biron, PE, SE, SECB
SEAOSC President

2016-2017

SEAOSC Board Nominees

Treasurer



Mehran Pourzanjani , SE , Principal - Saiful/Bouquet Structural Engineers

Mehran Pourzanjani is a Principal, of Saiful/Bouquet Structural Engineers. He has over 30 years of experience in designing buildings. His experience spans a wide spectrum of structures varying from institutional and public projects to healthcare, regional malls, high rise structures, and evaluation and strengthening of existing structures. Mr. Pourzanjani is the past president of the SEAOC Seismology Committee and continues to serve on that committee. Additionally he is currently serving on the SEAOC Standards, and the SEAOC Evaluation Services Committees as well as, ACI 318H, Seismic Provisions subcommittee. Mr. Pourzanjani has participated in university research through codification for the design and seismic performance of concrete elements and also served on the "PEER Tall Buildings Initiative" task group towards developing guidelines for the seismic analysis of tall buildings.

Directors



Matt Barnard, SE, Principal - Degenkolb Engineers

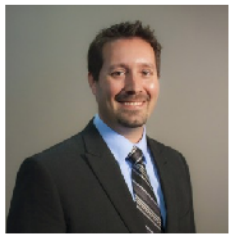
Matt Barnard is a Principal in the Los Angeles office of Degenkolb Engineers. Matt has a M.S. in Structural Engineering from the University of Illinois, Urbana-Champaign and is a licensed Civil Engineer and Structural Engineer in California. His experience includes new design, alternations, tenant improvements and retrofits for healthcare, higher education, and civic facilities.

Matt is a Los Angeles Affiliate Board Member and active mentor of ACE Mentoring and was named an National Outstanding Mentor in 2015. Matt is also a member of the national Guidelines Committee for the Council of American Structural Engineers, a member of the Technical Advisory Committee for the US Resiliency Council, and a past subcommittee chair for SEAOSC Buildings at Risk Summit. He is a disaster service worker volunteer through the California OES Safety Assessment Program. Matt also serves as a member of the part-time faculty for California State University, Fullerton.



Sandra Biddulph, SE – Principal DCI Engineers, Irvine

A California native, Sandra has been practicing Structural Engineering for over 25 years on the west coast, and is a Principal at DCI Engineers' Irvine office. Since joining the company, Sandra has been an integral addition to the DCI team. She brings an abundance of knowledge on a wide array of building types, design techniques, and an impressive understanding of codes and regulations. Sandra appreciates the art of structural design; watching a project come together, from the initial project conception through construction administration, with a tangible finished product that becomes a part of our built environment. Sandra earned her Bachelor of Science in Architectural Engineering from Cal Poly, San Luis Obispo, has served on the Board of Directors for SEAOC, and is a Past-President of the Structural Engineers' Association of San Diego.



Josh Gebelein, SE, Associate Principal – Brandow & Johnston, Inc.

Josh Gebelein has over 16 years of structural engineering experience and has distinguished himself as a versatile structural engineer on various iconic projects in the Southern California region. He is currently an Associate Principal at Brandow & Johnston and serves as Vice-Chair on the SEAOSC Seismology Committee. Josh is passionate about seismology and its effects on seismic building safety, along with the implementation of seismic research into engineering practice. His project experience runs the gamut from mundane improvements to high-performance designs, and also includes international projects, forensics and earthquake reconnaissance. Josh feels that seismic engineering is often more an art than science, and our social challenge is to continually strive to mitigate a risk which the general public does not fully appreciate. His personal goal is to make a positive difference within the structural engineering community both locally and globally, believing that even small differences can save lives.



Jackie Vinkler, SE Principal John A. Martin & Associates

Jackie Vinkler maintains a diverse and highly visible portfolio of structural engineering projects and trusted, long-term relationships with clients. She has more than 25 years of structural engineering experience, having completed building design and architecturally sensitive seismic retrofits for complex structures and buildings in healthcare, higher education, entertainment, hospitality, commercial, residential and cultural realms. She has also led teams of structural engineers to complete seismic evaluations of extensive building portfolios, as far reaching as the US State Department embassies and residential buildings overseas. Jackie is known for her levels of precision and a passion for meeting client deadlines and budgets. Her collaboration with high profile architectural counterparts has consistently produced creative structural design solutions which achieve the visions of project's diverse constituencies, including designers, owners, and stakeholders.



Kevin D. O'Connell, S.E.

2015-2016 SEAOSC Past-President

Kevin D. O'Connell is an Associate Principal in the Los Angeles office of Simpson Gumpertz & Heger Inc. Kevin has a B.S. in Civil Engineering from the University of Southern California, a M.S. in Structural Engineering from Stanford University, and is a licensed Civil Engineer and Structural Engineer in California. Kevin has extensive experience in new building design and the design of modifications to existing buildings including seismic retrofit and historic preservation. His experience includes entertainment industry related projects such as new sound stages and post-production buildings, performing arts centers, university buildings, laboratory buildings, and large single family residential estates. Kevin is active professionally and is the Immediate Past-President of the Structural Engineers Association of Southern California, a board member of the Structural Engineers Association of California, and a board member of the Western Chapter Association for Preservation Technology, and a member of numerous professional associations.

I am proud to have been involved in the leadership of SEAOSC for seven years. In that time there has been a great shift in the focus of the Association's priorities to an Association that is more member-centric with both internal events and activities and external outreach efforts that create opportunities for structural engineers to have an impact on the community. SEAOSC is a tremendous organization, and this is a great time to be a structural engineer in Southern California. I encourage all of our members to get involved with SEAOSC. Join a committee, help plan an event, join the Board, or simply attend a dinner meeting. I look forward to saying hello at the next event.



Welcome New Members - March 2016

Young Associate

- Catherine Goforth, caseybelle1@gmail.com, KPFF Consulting Engineers, Los Angeles

Member

- Inez Koe, inezkoe@gmail.com, Walter P Moore, Los Angeles

Student

- California Polytechnic University at Pomona
- Bosie State Idaho
- California State Polytechnic, University at Pomona
- California State University, Los Angeles



The Structural Engineers Association of Southern California (SEAOSC) is a professional organization of Civil and Structural Engineers which also includes affiliated construction industry members and students. The association provides its members with the educational opportunities and the challenge to meet high standards of engineering excellence, and ethical and professional conduct in the design of structures and facilities within the broader field of civil engineering.

<http://www.seaosc.org/join-seaosc>



SEAOSC

2016 Excellence in Structural Engineering Awards

CALL FOR ENTRIES

The Structural Engineers Association of Southern California (SEAOSC) is the Southern California professional organization for Structural Engineers. Each year, through SEAOSC's Excellence in Structural Engineering Awards program, recognition is given to SEAOSC Members and Member SE's that have demonstrated outstanding achievement and excellence in structural engineering practice and project work. The awarded projects and their recipients serve as models of excellence in structural engineering representing California Structural Engineers. The SEAOSC 2016 Awards will be presented at an awards ceremony and dinner at Luminarias Restaurant in Monterey Park, CA on June 1, 2016.

PURPOSE

The purpose of the SEAOSC Excellence in Structural Engineering Awards program is to publicly acknowledge outstanding achievement in creative design, technical innovation, best practices and demonstrated contributions to the public and/or profession. Additionally, it is the intent of the SEAOSC Awards program to educate the public as to the contributions of Structural Engineers to the built environment and public safety. Founded in 1929, SEAOSC is committed to advancing the art and science of structural engineering.

DEADLINE FOR ENTRIES

Entries with all supporting materials, **forms and fees must be received by 5 p.m. on Friday, April 29, 2016 at the address listed below**. NO EXCEPTIONS! Entry forms are included in this packet of information. Entry information packet and forms may also be downloaded from the SEAOSC website (www.SEAOSC.org). All entry materials should be clearly labeled as "Submission for SEAOSC 2016 Excellence in Structural Engineering Awards" and delivered to the following address:

SEAOSC 2016 Excellence in Structural Engineering Awards
c/o Robert Lyons, PE, SE
Risha Engineering
410 East Cypress Avenue
Burbank, California 91501

Learn more and apply [HERE](#)

SEAOC seeks attendees for Capitol hearing on SB 885

SEAOC is seeking members who can spend all or part of next Tuesday afternoon, May 3, in the State Capitol to show structural engineers' support for SB 885 (Wolk), the ACEC-sponsored bill to prohibit duty-to-defend clauses in public and private contracts.

Specifically, SEAOC and our allied design-professional organizations are aiming to fill the hearing room for the Senate Judiciary Committee, which is scheduled to hear SB 855 next Tuesday in Room 112 of the Capitol, any time from 1:30 p.m. on.

Those attending the hearing will get a chance to voice their support for the bill at the microphone. We want to demonstrate to the committee, with a show of bodies and voices, how the important SB 855 is to small firms and individual engineers.

If you think you might be able to attend, please email SEAOC Executive Director Don Schinske, dschinske@seaoc.org, for further information and coordination. At this point, it is impossible to know at what time exactly SB 885 will be heard, although we might have a better picture by the end of this week.

And please make those telephone calls per the [Legislative Alert](#) that SEAOC issued on Friday!
Thanks for all of your help.



April Meeting: Sustainable Design Committee

Please join us for the next **Sustainable Design Committee Meeting Thursday, April 28th at 5:30pm** at Holmes Culley's Los Angeles office in Downtown.

We will be discussing the goals and directions that the Committee wants to take and will be voting for our chair and vice-chair. This will be a great opportunity to get the committee started again and hear about the latest trends in sustainability. Dinner will be provided.

Please RSVP at nmahjoub@holmesculley.com

L.A. City Council celebrated the earthquake lady on 'Dr. Lucy Jones Day' on March 30th, 2016!

Read all about it [here](#).



James Lai with Dr. Norma Jean Mattei, ASCE President - Elect, and John Rogers, Los Angeles Section President

James Lai, F. SEAOC, F. ASCE, who is a SEAOSC Honorary member and one of the past presidents, has been conferred as a **Life Member of ASCE** for his lifetime dedication and service to the profession of civil engineering. Mr. Lai stated that his most significant lifetime achievement has been his participation in the full scale tests of Slender Wall Panels (1980), a joint research of SEAOSC and Southern California Chapter ACI Slender Wall Task Committee. He later served as lead author of the building code provision on alternate design of slender wall, which was first adopted into the legacy Uniform Building Code (1988) and currently in ACI 318 (since 1999 edition.) As a result of the Alternate Design of Slender Wall provision, the tilt-up design leaped frog into a new era of the tilt-up industry building construction.

Membership Appreciation Event



The SEAOSC Membership Event took place on Saturday, April 23rd at XLANES Bowling in Little Tokyo. Attendees were able to enjoy 2 hours of bowling, a taco bar & snacks, 1 hour of game play in the Arcade and 2 complimentary drinks for guests over 21. Also while downtown, attendees were encouraged to continue their night exploring the Arts District. This fun event was organized by the SEAOSC Membership Committee.



Thanks to



for their generous support of this event.

IMPORTANT MESSAGE

SEAOSC has avoided increasing the SEAOSC Dinner Meetings registration prices for several years. We are pleased with the increase in attendance this year and thank you for your support! To promote SEAOSC Membership benefits, and to adapt to rapidly changing meeting needs and trends, our dinner rate will be two-tiered and increase as of the April LA Dinner Meeting. The prices for the SEAOSC Dinner Meetings will change to the following:

Members:

Pre-registered – 6 days in advance: \$45

Pre-registered – 5 days in advance and On-site: \$55

Non-Members:

Pre-registered – 6 days in advance: \$55

Pre-registered – 5 days in advance and On-site: \$65

We look forward to seeing you at our next event!

SAVE THE DATE! ***SEAOSC Golf Tournament***

Monday, August 29, 2016

10:00 a.m.

Friendly Hills Country Club

8500 Villaverde Dr.

Whittier, CA 90605

Details Coming Soon!



POST-INSTALLED ANCHOR AND DIRECT FASTENING Webinar Series

May 2016

Cost Per Webinar:	SEAOSC Member	\$75
	Non-Member	\$150
	SEA Price	\$100



*All presentations are
Diamond Review Certified.*

An Overview of ACI 318 Anchorage Design

Monday, May 2, 2016 - 12:00pm – 1:30pm PT

Presented by Dick Morgan, P.E.

This presentation will cover the recent changes to ACI 318 anchor design. It will provide insight into the seismic provisions of ACI 318 for the installation and inspection of adhesive anchors. Seismic calculations will be explained via design example. The ductility provisions of ACI 318 and the overstrength provisions will be explained using design data for the Hilti Kwik Bolt-TZ post-installed mechanical anchor. Hilti PROFIS Anchor will also be utilized to illustrate how the seismic provisions of ACI 318 can be performed with anchor design software.

Dick Morgan is the PROFIS software and literature manager in the technical marketing department. He has a bachelor of science in civil engineering from Purdue University and is a licensed professional engineer in the state of Illinois. Dick is responsible for overseeing the support, development and testing of PROFIS Anchor and PROFIS Rebar.

Building Codes and Post-Installed Anchors

Monday, May 9, 2016 - 12:00pm – 1:30pm PT

Presented by Bernard Cruz, P.E.

This course will help an attendee to better understand ACI 318 Appendix D Strength Design provisions for post-installed anchors as well as dive into the ICC-Evaluation Services Acceptance Criterion of AC193 and AC308. It will also define creep, temperature and installation as it relates to adhesive anchoring systems. Through a demonstration of the hand calculations done through strength design, the attendee will also realize the potential time saver software such as PROFIS Anchor offers to their day-to-day operation.

Bernard has been with Hilti 13 years, currently serving as a Project Manager for Codes and Approvals on the West Coast with prior roles including Sr. Field Engineer, Technical Services Manager and Product Manager. He received his B.S. in Civil Engineering from Cal Poly Pomona and is a Licensed Civil Engineer in California. Prior to Hilti, Bernard was a design engineer in the Power and Petro industry where he gained extensive design experience in Foundation and Anchor design for Equipment and Vessels. As a Product Manager, Bernard was responsible for the launch of RE 500-SD and was on the development team for the HY 200 adhesive anchor system. Bernard's extensive field experience, product development and design knowledge make Bernard one of Hilti's go-to people for design solutions to address out of the ordinary conditions often encountered during design or construction.

Deck Connections and the Factors that Affect Performance

Monday, May 16, 2016 - 12:00pm – 1:00pm PT

This presentation will identify the factors influencing deck diaphragm design and explore the field and jobsite conditions affecting welding performance. It will emphasize the consistency of deck connection types to help the attendee understand the working principles of mechanical fasteners.

For more information and to register, please visit www.seaosc.org.



LA Dinner Meeting

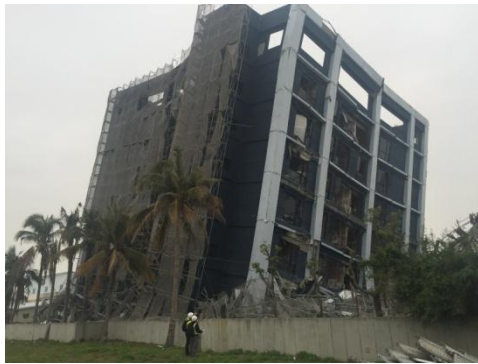
May 4, 2016

Lessons Learned from the 2016 Southern Taiwan Mei-Nong Earthquake

Location: Luminarias, 3500 Ramona Blvd., Monterey Park, CA 91754

Time: **Networking and Cash Bar:** 5:30 pm – 6:30 pm
Dinner: 6:30 pm
Presentation to follow Dinner

Cost:	Pre-registered – On or before April 29th	Pre-registered - After April 29 th & On-site:
Members:	\$45	\$55
Non-Members:	\$55	\$65
Reserve A Table (Members):	\$315	\$385
Reserve A Table (Non-Members):	\$385	\$455
Students:	\$25	\$25



TOPIC

After several days overseas, the Degenkolb Taiwan Earthquake Reconnaissance team returns from their journey with valuable information and lessons learned. The earthquake was a devastating event that killed 117 people and damaged over 80 buildings. Most of these buildings are composed of non-ductile concrete which reminds us of the importance in evaluating and strengthening these types of buildings in our communities. During this presentation Daniel Zepeda and Garrett Hagen will share their findings and lessons learned as they apply to our US practice.

PRESENTERS

Daniel Zepeda, S.E. 5260

Principal, Degenkolb Engineers

Daniel Zepeda received his Master's degree in Structural Engineering from the University of California, Berkeley and is a licensed Structural Engineer in California and a Principal with Degenkolb Engineers. With over 12 years of experience in seismic evaluation and seismic strengthening of existing buildings, Daniel's project breadth spans large medical centers, civic buildings and privately owned structures. He is the chair of the Structural Engineers Association of Southern California (SEAOSC)'s Existing Buildings Committee and is currently helping Cities in the Los Angeles area including the Cities of Los Angeles, Santa Monica, Beverly Hills and West Hollywood with their seismic programs. Daniel was a member of Degenkolb's post-earthquake reconnaissance team that surveyed both the 2010 Chile Earthquake, the 2010 Baja California Earthquake and the 2016 Taiwan Earthquake. He is also participating in the update of the latest version of ASCE 41.



Garrett Hagen, P.E.,

Design Engineer, Degenkolb Engineers

Garrett Hagen joined Degenkolb in 2012 after completing his Master of Science from California Polytechnic University, San Luis Obispo, where his graduate research involved performance-based analysis of concrete structural walls. Garrett actively contributes to research regarding earthquake resilience and developing the state of practice for earthquake-resistant structures through several published papers, committee reports, and the development of ASCE 41. Garrett is a delegate for the SEAOC state Existing Building Committee and a voting member on ACI Committees 369 and 374. Garrett's portfolio includes design and seismic strengthening schemes for a variety of facilities.



For more information and to register, please visit WWW.seaosc.org.



All presentations are
Diamond Review Certified.



Spring Education Program

Friday & Saturday, May 20 & 21 2016

Grand Event Center, 4101 East Willow Street, Long Beach, CA 90815

Attend One Day: \$195 (Member) or \$390 (Non-Member)

Attend Both Days: \$350 (Member) or \$700 (Non-Member) **Best Value!**

Students with valid ID receive 50% discount off Member price

Registrations received on May 15 or after add 20%.

SESSION 1: Friday, May 20

8:30am – 2:40pm

(5 PDH credits)

Registration opens at 7:30 am. Breakfast & lunch provided.

Changes to the Provisions for the Seismic Design of Nonstructural Components in ASCE/SEI 7-16

by John F. Silva, PE, SE, Hilti

Seismic Design of Special Concrete Shear Walls (ACI 318-14 Changes)

by S.K. Ghosh, PhD, S.K. Ghosh and Associates

New Diaphragm Design Requirements of ASCE 7-16

by S.K. Ghosh, PhD, S.K. Ghosh and Associates

SESSION 2: Saturday, May 21

8:30 am – 12:40 pm

(4 PDH credits)

Registration opens at 7:30 am. Breakfast provided.

SPC-4D the New Seismic Performance Category where non-Conforming Hospital Buildings can go Beyond 2030

by Roy Lobo, PhD, SE, OSHPD

Overall Changes to ASCE 7-16 and Changes to NLRH Analysis (Chapter 16)

by Ron Hamburger, PhD, SE, Simpson Gumpertz & Herger



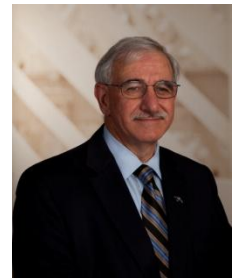
John F. Silva, PE, SE



S.K. Ghosh, PhD



Roy Lobo, PhD, SE



Ron Hamburger, PhD, SE

To learn more regarding the speakers, topics, and registration please visit www.seaosc.org

Want to Sponsor the Spring Education Program?

Sponsor: \$350: 2-day tabletop exhibit display

Please direct questions to:

Colleen Elkins, SEAOSC Development Manager

T: 562-908-6131; E: colleen@seaosc.org

KPFF Portland is looking for

Both Experienced and Entry-Level Structural Engineers

KPFF is about freedom. Freedom to work on what inspires you. Our engineers work on a vast spectrum of projects that are located around the globe: from anchorage of mechanical systems to complex, non-linear analysis of high-rise structures, we do it all. We have all the benefits of a large, stable firm but none of the red tape that comes with it. Providing first-class service to our clients is what we're about. KPFF is experiencing solid growth and continues to innovate and adapt to better serve our clients. We are a group of dedicated, friendly, collaborative, hard-working engineers and we are looking for exceptional engineers to join us. Please use the appropriate link below to review job details and apply.

Experienced Structural Engineer - Apply Here
(copy/paste into browser):

http://chc.tbe.taleo.net/chc05/ats/careers/requisition.jsp?org=KPFF_2&cws=63&rid=73

Entry-Level Structural Engineer - Apply Here (copy/paste into browser):

http://chc.tbe.taleo.net/chc05/ats/careers/requisition.jsp?org=KPFF_2&cws=63&rid=151

KPFF is an equal opportunity employer.

Holmes Culley is a California based structural engineering firm dedicated to providing quality service and creative design solutions. As part of the New Zealand based Holmes Group, we are an international practice with over 300 professionals in six offices, providing engineering expertise to clients along the West Coast and throughout the Pacific Region.

We are seeking structural engineers with 5+ years design experience for both our San Francisco and Los Angeles offices; M.S. degree in Structural Engineering and PE license are preferred.

Check us out at www.holmesculley.com and send your resume with cover letter to hr@holmesculley.com

Job Requirements:

- B.S. and/or M.S. Degree in Civil / Structural Engineering.
- 5+ years working in the field of structural engineering.
- Licensed Professional Engineer (PE) in the state of California.
- Seismic design experience or education.
- Verbal communication skills, including listening and questioning.
- Written communication skills, including report writing.
- Coaching/mentoring skills
- Presentation skills to contribute to team talks, and project presentations.
- Time management skills.
- Computer software skills: Intermediate MS Word, Advanced MS Excel, Intermediate ETABS, SAP, Risa (or equivalent).
- Problem-solving skills.
- Sound technical skills: understands structural engineering design principles.
- Team player: works with project team.
- Willing to travel to other locations for periods of time to undertake projects.

VCA Structural – Design Engineer II

Take your career to the next level. You'll be challenged and rewarded while working in a professional and family-oriented culture.

What's in it for you?

- As DEII you'll be responsible for calculations on projects related to **multi-story** residential podium, wrap, **mixed-use**, single family dwellings and/or parking structures.
- You'll continually **increase your technical** knowledge in the areas of wood design, concrete, masonry, basic code requirements, seismic requirements and more.
- You'll **work with respected** engineers, principals, owners and other stakeholders, etc.
- **Work independently** with minimum over-sight; and demonstrate your ability to effectively train others.
- **Requirements:** Degree in Civil or Structural Engineering and Licensed PE preferred, or commitment to getting your PE within 12 months of working with VCA.
- **Familiarity with:** (REVIT, ETABS, RAM Structural Suite, RISA, SAP90 and Windows programs
- Visit www.vcastructural.com. Position is in Orange, CA
- Of course...we have **outstanding benefits!**
- Compensation is commensurate – DOE & DOQ
- **Email Janet Boydell, Vice President of Staffing:**
janet.boydell@vcastructural.com

WoodWorks

Unique Career Opportunity Structural Engineer

Location: Home Based Office in So. CA

Details: Please visit

<http://www.woodworks.org/about-woodworks/careers/>

The Wood Products Council (WPC) is looking for a Technical Advisor to support design professionals when they have questions about the use of wood in non-residential or multi-family buildings.

Part of a national Design & Construction Services team, the Technical Advisor will work with the Regional Director to build a network of architects, engineers, builders and developers throughout So. CA, encourage these individuals to use more wood in their designs, and support their ability to do so by providing technical assistance.

If you are looking for a unique way to combine your people skills and structural engineering background, this might be the right opportunity for you!

To Apply: See

<http://www.woodworks.org/about-woodworks/careers/>



Structural Engineers Association OF SOUTHERN CALIFORNIA

COMMITTEE LEADERS

BOARD OF DIRECTORS

July 1, 2015 - June 30, 2016

The SEAOSC Board of Directors works on the behalf of our membership. If there are general or specific items you would like to see the Board of Directors address or discuss please contact any of the SEAOSC Board members.

President

Michelle Kam-Biron
mkambiron@awc.org
805-498-4864

President-Elect

Jeff Ellis
jellis@strongtie.com
714-738-2029

Treasurer

Robert "Bob" Lyons
blyons@risha.com
818-729-9777

Immediate Past President

Kevin O'Connell
kdoconnell@sgh.com
213-271-1934

Directors

Lorena Arce
arce@aisc.org
562-332-0990

Todd Brown
tbrown@dalechristian.com
714-997-1145

Jeffrey Haight
jhaight@eshse.com
805-963-1210

Colin Kumabe
colin.kumabe@lacity.org
213-482-0447

Edgar Plazola
eplazola@insight-se.com
310-640-0123

Joseph Valancius
valancius@kcse.com
818-240-1919

Paul Van Benschoten
vanbenschoten@coffman.com
818-285-2650

Victoria Wigle
vwigle@thorntontomasetti.com
213-330-7000

SEAOSC Executive Director

Lois Ehrlich
lois@seaosc.org
562-908-6131 ext.173

Get involved! Members are invited to join a SEAOSC committee. Please contact the chairperson for information on current projects and meeting times, dates and locations.

Committees	*Board Contact	Phone	Email
	Chair & Vice-Chairs		
Membership	Victoria Wigle* Kerry Regan Christian Cody	213-330-7000 323-536-2363 323-907-2523	vwigle@thorntontomasetti.com kregan@bbse.com christian.cody@hilti.com
Younger Members	Todd Brown* Nathan Jo Paul St. Pierre	714-997-1145 818-441-8014 562-754-0258	tbrown@dalechristian.com nathanjo@gmail.com paulleonestpierre@gmail.com
Image & Public Relations	Paul Van Benschoten* Ken O'Dell Samuel Mengelkoch	818-285-2650 562-985-3200 310-323-9924	vanbenschoten@coffman.com kodell@mhpse.com smengelkoch@structuralfocus.com
Technology	Lois Ehrlich* Casey Hemmatyar	310-437-0555 888-889-5643	lois@seaosc.org ckh@psfeg.com
Education	Lorena Arce* Daniel Fox	562-332-0990 562-985-3200	arce@aisc.org dfox@mhpse.com
Professional Bus. Practices	Bob Lyons*	818-729-9777	blyons@risha.com
Building Codes & Stds.	Jeff Ellis* Carl Sramek	714-738-2029 562-799-6010	jellis@strongtie.com sramekca@aol.com
Seismology	Colin Kumabe* Jesse Karns Mikhail Gershfeld	213-482-0447 562-964-7962 253-565-6600	colin.kumabe@lacity.org jkarns@sideplate.com mikhail.gershfeld@gmail.com
Sub Cmte: Research	Ashi Dhalwala	310-828-1422	ceginc1@yahoo.com
Sub Cmte: Steel Bldgs.	Colin Kumabe	213-482-0447	colin.kumabe@lacity.org
Existing Buildings	Edgar Plazola* Daniel Zepeda	310-640-0123 213-596-5000	eplazola@insight-se.com dzepeda@degenkolb.com
Disaster Emergency Svcs.	Joseph Valancius* Doug Litchfield	818-240-1919 818-913-3558	valancius@kcse.com dlitchfield@mwrdh2o.com
Quality Assurance	Bob Lyons*	818-729-9777	blyons@risha.com
Legislative	Kevin O'Connell*	213-271-1934	kdoconnell@sgh.com
Sustainable Design	Jeff Haight*	805-963-1210	jhaight@eshse.com
EPRS Ad Hoc	Leo Torres	818-844-1969	torres@kcse.com

Please visit

<http://seaosc.org/about-structural-engineering/committees>

to view the annual committee charges and tasks.

