



Online Voting for 2016 Officers & Directors

Voting concluded and the ballots are in for the 2016-2017 Board of Directors. Attend the June 1st Annual End-of-Year-Awards and Presidents Dinner to hear the results!

Annual End-of-Year Awards & President's Dinner

Location: Luminarias, 3500 Ramona Blvd., Monterey Park, CA 91754

Time: **Social Hour/Networking:** 5:30 pm – 6:30 pm

Dinner: 6:30 pm

Program/Awards: 7:30 pm

Cost:

	Pre-registered – On or before May 27 th	Pre-registered - After May 27 th & On-site:
Members:	\$45	\$55
Non-Members:	\$55	\$65
Reserve A Table (Members):	\$315	\$385
Reserve A Table (Non-Members):	\$385	\$455
Students:	\$25	\$25

SEAOSC EISE Awards

Who will win the annual awards?

Excellence in Structural Engineering, Honorary Member, SEAOSC Fellow, Public Service Award, Engineer of the Year **Board of Directors "Hail-and-Farewell"**

Goodbye to the departing Board members & Welcome to new Board for 2016-2017. Officers and directors will be announced at this event.

SEAOSC Past Presidents: SEAOSC will honor you with one complimentary dinner and recognition for your past and current contributions. Please register with the code that will be sent in your email invitation.

EISE Awards: SEAOSC will email you details on registering for the dinner. Please remember to pick-up your poster boards at the conclusion of the evening if you wish to retain your board.

Volunteers & Committee Members: If you have served SEAOSC this past year in a volunteer capacity or on a committee, please attend this event so you may be recognized too. We couldn't be awesome without you! Please register for dinner online. **Spouses & Significant Others:** We invite you to attend and meet the engineers who have become friends throughout the year. Members, please register your guest when registering for your dinner registration for your guest to receive the members rate.

[Register HERE](#)

- 2 President's Letter
- 5 Board Nominee Biographies
- 6 Outgoing Board Members
- 7 April New Members
- 8 Obituary
- 9 Ordinance No. 184169
- 10 US Resiliency Council
- 11 SEAOSC YM Stipend
- 12 Announcements!
- 13 April LA Dinner Meeting Recap
- 14 Events

SAVE THE DATE!

JUNE

1 EISE Awards & President's Dinner Meeting

Luminarias, Monterey Park

11 SAP Training

Westside Conference Center at Pepperdine University

Los Angeles, CA

AUGUST

29 SEAOSC Golf Tournament

Friendly Hills Country Club

Whittier, CA



Michelle Kam-Biron, PE, SE, SECB

Are you ready for the summer? It seems like yesterday we were just talking about the holiday season. June not only brings us the beginning of summer but also the end of the school year and the end of the **SEAOSC 2015-16** fiscal year which means... **drum roll please...** yes, the end of my term as President!!! Yahoo! **Let's Celebrate!**

When I think back of when I first took office, I tried to be realistic about what I wanted to accomplish. Based on my conversations with SEAOSC Past-Presidents and Presidents of other MO's, I think most of the people who have held this office, want to do what is best for SEAOSC and are optimistic about what they would like to accomplish during their term. However, the association is like a big ship that can't make abrupt huge course changes but rather needs time to acclimate and g-r-a-d-u-a-l-l-y transition. It can be a daunting task to do everything that one hopes to accomplish and my hopes for change were no exception to make an **IMPACT** on SEAOSC. Some of the things that I had set out to do included: continuing to move SEAOSC forward with the Re-Alignment Plan, improve SEAOSC operations, re-invigorate the committees, increase participation by women and younger civil/structural engineers, connect senior engineers with younger engineers, provide our association with the opportunity look outward rather than inward and pretty much change the world! The foundation for all of these ideas has to do with envisioning the future and thinking about how SEAOSC can still be relevant and sustain our association. If we continue to look inward and do the things that we have continued to do as status quo, we will eventually cease to exist because the world around us continues to change and evolve. One of the worst things that businesses can say is, "We've done it this way for years... why do we have to change?"

The only thing that is constant is change. - Heraclitus

In order to be successful, we need to be open-minded enough to understand that change can be a good thing. We also need to have a clear understanding of the mission and goals of SEAOSC, understand the tactics to achieve the goals, be realistic about the

resources that are available and have the fortitude for implementation. All the while, keeping in mind, SEAOSC's membership's needs to meet the current and future demands of the industry. One of the biggest changes that we made this year was to hire a new association management company (AMC). That in itself was a huge endeavor. Our primary objective was to enhance and expand SEAOSC operations so that we're prepared for the future of broadening SEAOSC's scope to further implement the Re-Alignment Plan. As many of you know, we are unfortunately in search of another new AMC since BSC Management has decided to end the agreement with SEAOSC. We are optimistic that we'll find a great company which will be able to work with SEAOSC well and help us reach the next level. We anticipate that we'll have a new AMC on board before September. We had a very successful Fall Welcome Event that had over 170 attendees and highlighted the SEAOSC committees. Additionally, each of the committees had people who were interested in participating or learning more about them. As a result of the event, we now see some of the inactive committees starting anew such as the Codes and Standards, Sustainable Design, Membership, and Image & PR.

Due to the fantastic work that the **EDUCATION COMMITTEE** has done, led by Tim Kaucher and now Daniel Fox, we've had much higher attendance at our Dinner meetings this year. The Fall Welcome Event was probably one of the highest attended dinner meetings in some time second only to our April Dinner meeting that featured a Building Official Forum. We've been developing relationships with other associations to extend our outreach in the building industry such as with BOMA, CALBO, and ICC and this Forum assisted with nurturing the relationship with Code Officials that in the past has been splintered. Our active involvement with the City of LA, not only highlighted the importance of structural engineers but also extended our **IMPACT** on the community as well as the building codes resulting in the passing of LA's seismic retrofit ordinance. The **EXISTING BUILDINGS COMMITTEE** led by Daniel Zepeda and **SEISMOLOGY COMMITTEE** led by Jesse Karns, have heroically been spending countless hours of volunteer effort to complete the LA Ordinance seismic retrofit design examples showcasing SEAOSC structural engineering expertise. SEAOSC was also at

the forefront of working with City of LA's Chief Seismic Resilience Office, Marissa Aho to assure that SEAOSC not only presented at [Mayor Garcetti's Seismic Retrofit Fair](#) but also provided our membership with the opportunity to have a substantial presence at the event. Victoria Wigle and Annie Kao have also been instrumental in leading the **SUMMIT COMMITTEE** in continuing to bring together community leaders to present resources and tools for building owners, businesses, and government officials to understand the risk they face and how to mitigate losses as well as the importance of engaging structural engineers.



Figure 1: Victoria Wigle, Michelle Kam-Biron and Annie Kao at the National Earthquake Conference, Long Beach, CA

Most recently, Victoria, Annie and I represented SEAOSC at the [2016 National Earthquake Conference](#) and presented "Effectively Communicating Seismic Risk", to an audience of emergency managers, insurance professionals, academia, public and private policy makers, etc.. The presentation was about who SEAOSC is, how we have helped lead the effort to educate leaders on seismic safety, how organizations and cities can partner with structural engineers to make their building investment last and tackle the challenge of how to explain these issues to both clients and policymakers. As well as communicating building performance levels and retrofit solutions clearly to clients to help foster a relationship essential to moving forward towards strengthening our cities. Related to understanding building seismic risk, Leo Torres

led the **ERPS AD HOC COMMITTEE** in its effort to review the Earthquake Performance Rating System. I attended the May ICC Southern California Regional Chapter meeting which included representatives from several ICC SoCal Chapters. Not only was this furthering SEAOSC's presence amongst the code officials but it also provided me with some insight into the struggles that their sector of the industry is facing. It was mentioned that 80% of their workforce will be retiring within the next 10 years and they are looking for ways to bridge the gap between this loss of code officials and the lack of new younger people entering into this field. This really hit close to home because we are currently seeing some of this and may be faced with a huge deficit of engineers in our field due to lack of young people interested in entering into this field or people leaving this profession. We need to have a better understanding about the makeup of our profession and the SEAOSC membership. An attempt to do the former was implemented via a survey that was sent out a few months ago by SEAOSC, and SEAOSC will launch a survey during membership renewal to better understand our members. I realize most people don't like completing surveys but this is an opportunity to communicate to SEAOSC your wants and needs. So please help us by responding to the survey.

On another note, we're seeing more evidence that women are leaving the field and/or are not interested in joining SEAOSC for whatever reason. Over the past few months I've spoken to several women engineers in our industry and I know there is a strong desire to improve oneself through networking, education and social activities. We had over sixty women who are interested in learning about future activities that focus on women engineers; something that SEAOSC has not done in the past but I hope to continue to try to change. I have to thank Lorena Arce, Annie Kao, Victoria Wigle, and Kirsten Zeydel who helped in this effort. There is hope that this may become part of the **MEMBERSHIP COMMITTEE** under the leadership of Kerry Regan and Christian Cody who have clearly met the task of a fresh start, and successfully hosting a Membership Appreciation Event. They are already planning for the next year.

We've had great success with the **IMAGE & PR COMMITTEE** led by Sam Mengelkoch and Ken O'Dell who have spread our outreach at events such as: Mayor Garcetti's Seismic Retrofit Fair, American Red Cross - Disaster Preparedness Academy, ICC Annual Conference and creating an [FAQ: L.A. Retrofit Ordinance for Soft](#)



We've had great success with the **IMAGE & PR COMMITTEE** led by Sam Mengelkoch and Ken O'Dell who have spread our outreach at events such as: Mayor Garcetti's Seismic Retrofit Fair, American Red Cross - Disaster Preparedness Academy, ICC Annual Conference and creating an **FAQ: L.A. Retrofit Ordinance for Soft Story & Non-Ductile Concrete Buildings** webpage and a **SEAOSC Brochure!** Not only has the **DISASTER EMERGENCY SERVICES COMMITTEE**, led by Doug Litchfield been planning for SEAOSC SAP Training but the committee was involved with helping Image & PR with the Red Cross event.

Nathan Jo and Paul St. Pierre have led the **YOUNGER MEMBER COMMITTEE** with hosting a very successful Student Scholarship Awards Night which provided over \$6000 in scholarships to students. The YM Committee continues to engage younger engineers, which is paramount to the future of SEAOSC. I haven't mentioned all of the things that we've accomplished this year but we've definitely done quite a bit. This could not have been accomplished without the SEAOSC Committees nor the assistance of BSC Management who came on board under less than desirable circumstances but provided very professional and competent association management services.

I am especially thankful for the leadership of the SEAOSC Board:

President-Elect Jeff Ellis, S.E.

Treasurer Robert "Bob" Lyons, S.E.

Immediate Past-President Kevin O'Connell, S.E.

Director Lorena Arce, P.E.

Director Todd Brown, S.E.

Director Jeffrey Haight, S.E.

Director Colin Kumabe, S.E.

Director Edgar Plazola, S.E.

Director Joseph Valancius, S.E.

Director Paul Van Benschoten, S.E.

Director Victoria Wigle, S.E.

who provided sound input and valuable volunteer time to help navigate SEAOSC. We know the saying, "It Takes a Village" and that is so true...we are a community of structural engineers, civil engineers, building officials, building product industry, academia,

students and so much more who are all part of this wonderful professional association called SEAOSC and I am very thankful of having the honor of being President with tremendous help from all of you. THANK YOU!!! Lastly, and most importantly, I would like to thank my family and the **American Wood Council** for supporting me in this effort because without their help I would have never been able to do this!

SEAOSC provides a great opportunity beyond our workplace and families that widens our circle of people that we interact with and thus widening our influence in the industry. A wider circle gives us not only a place to belong, but a significant role to engage in a bigger story. And who we do this with is not only important because of what it gives to us, but also because of what it requires from us. Believe it or not, we need more than just a family that gives unconditional acceptance and love; we need a tribe that gives us a sense of belonging and significance and I hope that in the future we are able to interest others in our industry to climb aboard and be a part of SEAOSC.

Looking to the future, as Jeff Ellis takes over as President, I am sure that he will do a great job continuing to navigate this huge ship of SEAOSC with the help of Treasurer: Mehran Pourzanjani and Directors: - Matt Barnard - Sandra Biddulph - Josh Gebelien - Jackie Vinkler and continuing Directors: Lorena Arce, Todd Brown, Jeff Haight and Victoria Wigle. As we look to the future my hope is that we will continue to look for ways in which we can improve and embrace change where needed so that we can have an **IMPACT** to improve not only our profession but our community in which we live because it would be great if one day, **what if we covered engineers like celebrities?** Or rather than reporters thinking that an architect is the structural expert, they actually call a structural engineer BEFORE a structural collapse occurs.

If you have read my previous President's messages, you know that I often link videos throughout my message to make it a three dimensional experience. Ending on a fun note, here are a few videos that didn't make it into my message or are repeats to think outside the box, **outside of our mind** and just because:

- [The Voice of the Trees by Bartholomaeus Traubeck](#)
- [Chewbacca Mask](#)
- [Top 50 Favorite Leadership Quotes](#)
- [Dancing Guy](#)

Have an Extraordinary [Life](#) and [Dream!](#)

Michelle Kam-Biron, PE, SE, SECB
SEAOSC President

2016-2017

SEAOSC Board Nominees

Treasurer



Mehran Pourzanjani , SE , Principal - Saiful/Bouquet Structural Engineers

Mehran Pourzanjani is a Principal, of Saiful/Bouquet Structural Engineers. He has over 30 years of experience in designing buildings. His experience spans a wide spectrum of structures varying from institutional and public projects to healthcare, regional malls, high rise structures, and evaluation and strengthening of existing structures. Mr. Pourzanjani is the past president of the SEAOC Seismology Committee and continues to serve on that committee. Additionally he is currently serving on the SEAOC Standards, and the SEAOC Evaluation Services Committees as well as, ACI 318H, Seismic Provisions subcommittee. Mr. Pourzanjani has participated in university research through codification for the design and seismic performance of concrete elements and also served on the “PEER Tall Buildings Initiative” task group towards developing guidelines for the seismic analysis of tall buildings.

Directors



Matt Barnard, SE, Principal - Degenkolb Engineers

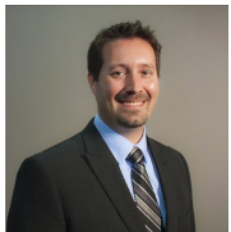
Matt Barnard is a Principal in the Los Angeles office of Degenkolb Engineers. Matt has a M.S. in Structural Engineering from the University of Illinois, Urbana-Champaign and is a licensed Civil Engineer and Structural Engineer in California. His experience includes new design, alternations, tenant improvements and retrofits for healthcare, higher education, and civic facilities.

Matt is a Los Angeles Affiliate Board Member and active mentor of ACE Mentoring and was named an National Outstanding Mentor in 2015. Matt is also a member of the national Guidelines Committee for the Council of American Structural Engineers, a member of the Technical Advisory Committee for the US Resiliency Council, and a past subcommittee chair for SEAOSC Buildings at Risk Summit. He is a disaster service worker volunteer through the California OES Safety Assessment Program. Matt also serves as a member of the part-time faculty for California State University, Fullerton.



Sandra Biddulph, SE – Principal DCI Engineers, Irvine

A California native, Sandra has been practicing Structural Engineering for over 25 years on the west coast, and is a Principal at DCI Engineers’ Irvine office. Since joining the company, Sandra has been an integral addition to the DCI team. She brings an abundance of knowledge on a wide array of building types, design techniques, and an impressive understanding of codes and regulations. Sandra appreciates the art of structural design; watching a project come together, from the initial project conception through construction administration, with a tangible finished product that becomes a part of our built environment. Sandra earned her Bachelor of Science in Architectural Engineering from Cal Poly, San Luis Obispo, has served on the Board of Directors for SEAOC, and is a Past-President of the Structural Engineers’ Association of San Diego.



Josh Gebelein, SE, Associate Principal – Brandow & Johnston, Inc.

Josh Gebelein has over 16 years of structural engineering experience and has distinguished himself as a versatile structural engineer on various iconic projects in the Southern California region. He is currently an Associate Principal at Brandow & Johnston and serves as Vice-Chair on the SEAOSC Seismology Committee. Josh is passionate about seismology and its effects on seismic building safety, along with the implementation of seismic research into engineering practice. His project experience runs the gamut from mundane improvements to high-performance designs, and also includes international projects, forensics and earthquake reconnaissance. Josh feels that seismic engineering is often more an art than science, and our social challenge is to continually strive to mitigate a risk which the general public does not fully appreciate. His personal goal is to make a positive difference within the structural engineering community both locally and globally, believing that even small differences can save lives.



Jackie Vinkler, SE Principal John A. Martin & Associates

Jackie Vinkler maintains a diverse and highly visible portfolio of structural engineering projects and trusted, long-term relationships with clients. She has more than 25 years of structural engineering experience, having completed building design and architecturally sensitive seismic retrofits for complex structures and buildings in healthcare, higher education, entertainment, hospitality, commercial, residential and cultural realms. She has also led teams of structural engineers to complete seismic evaluations of extensive building portfolios, as far reaching as the US State Department embassies and residential buildings overseas. Jackie is known for her levels of precision and a passion for meeting client deadlines and budgets. Her collaboration with high profile architectural counterparts has consistently produced creative structural design solutions which achieve the visions of project’s diverse constituencies, including designers, owners, and stakeholders.



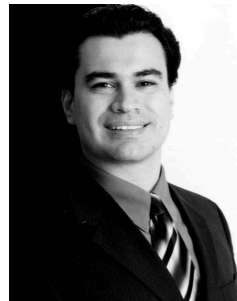
Past-President: Kevin O'Connell, SE - Simpson Gumpertz & Heger

My time on the board, and specifically as President, can be summed up with a quote from Dickens. "It was the best of times, it was the worst of times, it was the age of wisdom, it was the age of foolishness..." I hope that wisdom prevailed. I believe that SEAOSC is stronger now than when I started and I hope my efforts had a little bit to do with that. It was an honor serving our membership on the Board of Directors. I thank you all for that privilege.



Director: Colin Kumabe, City of Los Angeles, Department of Building and Safety

Being a board member was an honor and a chance to give back to the Structural Engineering profession. The association faced many challenges during my tenure and I appreciate the efforts SEAOSC volunteers put forth. Big thanks to Jesse Karns and the Seismology Committee members in their efforts to develop protocol for retrofitting nonductile concrete and proposed code changes.



Director: Edgar Plazola, SE - Insight Structural Engineers

I am a proud member of SEAOSC since my junior year in college. Much like my college experience, the association has left an indelible mark on me both personally and professionally. During my service as a Director, I have had the opportunity to work alongside some of the most talented engineers in our association. Together, we have continued the development of the Realignment Plan, LA City ordinances and building performance rating systems. As I transition back to the membership, I am confident the new and continuing Directors will further promote our image and contributions to society.



Director: Joe Valancius, SE - J&J Engineering & Testing, Inc.

Being a SEAOSC Board Member for the last two years has been a worthy, rewarding and humbling experience, and I am glad I was convinced by Janah Risha to take the plunge. SEAOSC is an outstanding organization with dedicated individuals donating their time and expertise to making the organization successful and better, for all engineers and practitioners engaged in structural engineering and related fields. Being a board member has enabled me to see firsthand how the organization is run and the decision making process. Not all SEAOSC members will agree with all board decisions, but I can confirm first hand that the leaders of SEAOSC are selfless, dedicated to our profession, and always put the needs of the organization before everything else they do. I am amazed at the dedication of our executive committee – the amount of time and energy they dedicate to our organization is unbelievable. It is an exciting time for structural engineering in Southern California and current and future boards have their work cut out for them. I wish them luck.



Director: Paul Van Benschoten, SE - Coffman Engineers, Inc.

Serving as a Director has been a valuable and rewarding experience. As a SEAOSC Director I was fortunate to discuss important topics that directly affect our profession and public safety. The new mandatory LA City seismic ordinances, building seismic performance ratings, wood frame balcony design changes, and professional ethics were some of the more important topics the Board tackled during my two-year term. I wish the new Directors good luck and wisdom navigating through the current and future improvements to our dynamic profession.



Welcome New Members - April 2016

Young Associate

Catherine Goforth, caseybelle1@gmail.com, KPFF Consulting Engineers, Los Angeles

Member

Inez Koe, inezkoe@gmail.com, Walter P Moore, Los Angeles

Student

Bosie State Idaho

California State Polytechnic University at Pomona

California State University, Los Angeles



The Structural Engineers Association of Southern California (SEAOSC) is a professional organization of Civil and Structural Engineers which also includes affiliated construction industry members and students. The association provides its members with the educational opportunities and the challenge to meet high standards of engineering excellence, and ethical and professional conduct in the design of structures and facilities within the broader field of civil engineering.

<http://www.seaosc.org/join-seaosc>

Obituary



Donald Kenneth Jephcott

November 19, 1919 - April 18, 2016

It is with a heavy heart we announce the death of Don Jephcott. He died peacefully in his sleep at home in Irvine, California. Don was born to Douglas & Gertrude (Thiele) Jephcott in Los Angeles, California. He graduated from Belmont High School in 1937 and Caltech in 1942 with a BS in Engineering with honors. He worked for the State of California retiring in 1984 as Chief Structural Engineer for the Office of the State Architect. He also authored a book and several papers on seismic engineering. Even after retiring he continued to contribute as a member of a number of earthquake related boards and committees. He was preceded in death by his beloved wife Alice and his granddaughter Keri. He will be dearly missed by his son Ken, daughter and son-in-law Jan and Jerry Scheer, grandson-in-law Scott, great-granddaughters Kaitlynn and Ginger, and his many friends. The family wishes to thank his wonderful caregivers: Manny, Catherine, and Rudy who made his last days the best they could be. A funeral service will be held at St. Matthews Church 2300 Ford Road, Newport Beach on Saturday, May 7 at 11AM. Reception to follow at the church.

He was a SEAOSC President in 1973-1974, a SEAOC College of Fellow recipient in 1995-96 and a Honorary Member.

In lieu of flowers donations may be made in Don's name to the Cal Tech Alumni Fund 1200 E. California Blvd. m/c 5-32, Pasadena, CA 91125, or "Choose Nursing Choose Hoag" PO Box 6100 Newport Beach, CA 92658. Published in the Los Angeles Times on May 1, 2016.

Read more [here](#).



The City of Los Angeles' Ordinance No. 184169 Mandates the Evaluation & Retrofit of Bldgs. that Experience Substantial Damage at Low Levels of Shaking

Los Angeles-area, CA, May 11, 2016 -- The Los Angeles City Council passed Ordinance No. 184169 on March 29, 2016. Effective May 11, 2016, the ordinance mandates the evaluation and retrofit of buildings that experience substantial structural damage at low levels of earthquake shaking.

This ordinance requires that immediately after an earthquake, a damaged building be evaluated and findings submitted to the building official. If the evaluation finds substantial structural damage, the building's retrofit scheme will be designed for moderately reduced building code level design loads. For specific technical values, [read Ordinance No. 184169](#). If less than substantial damage is found, the building can be repaired to its pre-damaged condition.

Ordinance No. 184169 is one of the multiple recommendations outlined in the Los Angeles Mayor's [Resilience by Design](#) report, Strengthen Our Buildings category. In 2015, the city of Los Angeles passed two ordinances involving the first two recommendations: the mandatory seismic retrofit of soft-story and concrete buildings. The ordinance effective today addresses the task force's recommendation of a mandatory retrofit of buildings that incur excessive damage in a low level of shaking.



FOR IMMEDIATE RELEASE

Contact: Evan Reis
Phone: 1-650.804.5737

U.S. Resiliency Council ATTENDS WHITE HOUSE SUMMIT ON RESILIENT BUILDING CODES

Invitation-only event addresses the future of building codes

WASHINGTON, DC, May 10, 2016 – Today the U.S. Resiliency Council (USRC) attended the White House Summit on Resilient Building Codes. This invitation-only event brought together leading engineers, architects, scientists, professional organizations, and stakeholders from across the nation to discuss the future of building codes and the need to establish resilience as a key design objective for buildings in the U.S. The summit follows President Obama's Executive Order, *Establishing a Federal Earthquake Risk Management Standard*, released on February 2, 2016. Evan Reis, co-founder of the USRC and the organization's representative at the summit noted, "The summit was an opportunity for engineers, architects, and other design professionals who have been working for more than 20 years to promote resilience in the built environment, to collaborate with leaders in the public sector, insurance industry, and code-writing bodies on ways to make a strong social and financial value proposition for integrating resilience into our nation's building codes. Much as the LEED® system for energy and environmental sustainability has become fully integrated with building design throughout much of the country, resilience is the next goal of making sure that not only will our buildings have a low impact on the environment, the environment will have a low impact on them." *The USRC includes 64 Founding Members made up of the leading professional organizations in earthquake and structural engineering, many large and small structural engineering firms, architects, contractors and hardware and software suppliers. The Council's mission is to establish and implement meaningful rating systems that describe the performance of buildings during earthquakes and other natural hazard events, to educate the general public to understand these risks, and to thereby improve societal resilience.*

###

SEAOSC YM STIPEND TO ANNUAL SEAOC CONVENTION

DESCRIPTION:

The SEAOSC Board of Directors will be awarding (2) stipends in the amount of \$1200 for the 2016 SEAOC Convention. The on-line application will be made available through June 19th, 2016. The stipend recipients shall be notified by June 30, 2016.

PURPOSE:

- 1) Facilitate participation to a SEAOSC Younger Member who would not otherwise attend due to insufficient funding.
- 2) Support the professional development of a SEAOSC Younger Member.
- 3) Broaden SEAOSC's networking opportunity among the MO's.

[For information on qualifications and to apply click HERE!](#)

For more information about the SEAOC Convention please see <https://convention.seaoc.org/>



Are you passionate about seismic retrofit of concrete buildings and making the City of Los Angeles safer in the next big earthquake?

The **SEAOSC Seismology Committee** is seeking help in developing a Non-Ductile Concrete Design Guide to demonstrate the methodologies and considerations for implementing the Recently enacted City of Los Angeles Ordinance for the "Mandatory Earthquake Hazard Reduction in Existing Non-Ductile Concrete Buildings".

If you are interested in helping, please contact: Josh Gebelein, task group chair at (213) 596-4540 or JGebelein@bjsce.com

April LA Dinner Meeting

The April LA Dinner Meeting was very successful with over 100 attendees and over 10 exhibitors! The panel discussion moderated by Jeff Ellis, SE "Process Evolution & Best Practices to Facilitate Plan Check!" with state agencies and building department leaders was superb. Thank you to our panelists Colin Kumabe, SE, Douglas Humphrey, AIA, David Khorram, PE, Roy Lobo, SE. Attendees learned about the adoption and enforcement of the new 2016 CBC, they heard about the current plan check process and received advice on best practices.



Thank you to our exhibitors!

ASC Steel Deck,
Atlas Tube,
CoreBrace,
Hilti Inc,
Hoover Treated Wood Products,
IAPMO Uniform,
Evaluation Service,
Louisiana-Pacific Corp.,
Mitek, PNA,
Simpson Strong-Tie,
Vulcan Materials Company



Past Presidents,

You are cordially invited to the Annual End-of-Year Awards & Presidents Dinner

When

June 1, 2016

Social Hour/Networking: 5:30pm

Dinner: 6:30pm

Awards: 7:30pm

Where

Luminarias Restaurant

3500 Ramona Blvd.

Monterey Park, CA

Register

Please register online [here](#) using the coupon code that was emailed to you earlier this month to claim your complimentary registration by Friday, May 27.

Contact Carrie Ahern at
registration@seaosc.org for assistance.



Annual End-of-Year Awards & President's Dinner

Location: Luminarias, 3500 Ramona Blvd., Monterey Park, CA 91754

Time: **Social Hour/Networking:** 5:30 pm – 6:30 pm
Dinner: 6:30 pm
Program/Awards: 7:30 pm

Cost:

	Pre-registered – On or before May 27 th	Pre-registered - After May 27 th & On-site:
Members:	\$45	\$55
Non-Members:	\$55	\$65
Reserve A Table (Members):	\$315	\$385
Reserve A Table (Non-Members):	\$385	\$455
Students:	\$25	\$25

SEAOSC EISE Awards

Who will win the annual awards?

Excellence in Structural Engineering, Honorary Member, SEAOSC Fellow, Public Service Award, Engineer of the Year

Board of Directors "Hail-and-Farewell"

Goodbye to the departing Board members & Welcome to new Board for 2016-2017. Officers and directors will be announced at this event.

SEAOSC Past Presidents: SEAOSC will honor you with one complimentary dinner and recognition for your past and current contributions. Please register with the code that will be sent in your email invitation.

EISE Awards: SEAOSC will email you details on registering for the dinner. Please remember to pick-up your poster boards at the conclusion of the evening if you wish to retain your board.

Volunteers & Committee Members: If you have served SEAOSC this past year in a volunteer capacity or on a committee, please attend this event so you may be recognized too. We couldn't be awesome without you! Please register for dinner online.

Spouses & Significant Others: We invite you to attend and meet the engineers who have become friends throughout the year. Members, please register your guest when registering for your dinner registration for your guest to receive the members rate.

For more information and to register, please visit WWW.SEAOSC.ORG.

Post-Disaster Safety Assessment Evaluator Training

Presented by the SEAOSC Disaster Emergency Services Committee



Cal OES
GOVERNOR'S OFFICE
OF EMERGENCY SERVICES

Saturday, June 11, 2016 * 8:00am – 3:30pm
Westside Conference Center
6100 Center Dr, Los Angeles, CA 90045

Cost	Before June 4 th	On or After June 4 th
SEA Member	\$80	\$100
Non-Member	\$140	\$160

Registration at 7:30 AM (Includes continental breakfast, box lunch & ATC 20-1 Field Manual)
Parking is \$5 with validation

REGISTER NOW at <http://www.cvent.com/d/zfq50j>

This training will provide a comprehensive overview of the California Emergency Management Agency (CalEMA) Safety Assessment Program, practical building evaluation exercises, criteria for assessing the severity of facility and lifeline systems damage, and procedures for posting and barricading. The ATC 20-1 Field Manual: "Post-Earthquake Safety Evaluation of Buildings, Second Edition" and additional materials will be provided.



"All registered SAP evaluators must be professionally registered engineers, professionally licensed architects, certified building officials or inspectors. They must also have a general knowledge of construction, professional experience and judgment." Those without the above qualifications may attend but will not receive a state-issued CalOES card.

Those already possessing a CalOES (California Office of Emergency Services) card should check their expiration date. State-issued cards expire five years after the training date. **Please note that older OES cards with indefinite expirations or expired cards are no longer valid.** Enrollment in SAP Evaluator Program will be necessary to recertify.

If your SAP Evaluator card has recently expired or is about to expire, you can continue your registration in the program by taking an online refresher training. Have your 5 digit badge number available to register. Go to <https://w3.calema.ca.gov/RespRecover/sapreg.nsf/SAPRegistrationEval3?OpenForm> for more information.

Licensed or certified professionals who are members of ASCE, AIA, SEAOC or CALBO will receive a new SAP volunteer card and will be allowed to "tag" buildings in the event of a disaster. This process is not intended to identify or quantify damaged facilities but to evaluate their potential for safe use.

More information available at www.seaosc.org
For any question regarding registration, please contact registration@seaosc.org.



SAVE THE DATE!
SEAOSC Golf Tournament

Monday, August 29, 2016
10:00 a.m.

Friendly Hills Country Club
8500 Villaverde Dr.
Whittier, CA 90605

Details Coming Soon!

KPFF Portland is looking for

Both Experienced and Entry-Level Structural Engineers

KPFF is about freedom. Freedom to work on what inspires you. Our engineers work on a vast spectrum of projects that are located around the globe: from anchorage of mechanical systems to complex, non-linear analysis of high-rise structures, we do it all. We have all the benefits of a large, stable firm but none of the red tape that comes with it. Providing first-class service to our clients is what we're about. KPFF is experiencing solid growth and continues to innovate and adapt to better serve our clients. We are a group of dedicated, friendly, collaborative, hard-working engineers and we are looking for exceptional engineers to join us. Please use the appropriate link below to review job details and apply.

Experienced Structural Engineer - Apply Here
(copy/paste into browser):

http://chc.tbe.taleo.net/chc05/ats/careers/requisition.jsp?org=KPFF_2&cws=63&rid=73

Entry-Level Structural Engineer - Apply Here (copy/paste into browser):

http://chc.tbe.taleo.net/chc05/ats/careers/requisition.jsp?org=KPFF_2&cws=63&rid=151

KPFF is an equal opportunity employer.

Holmes Culley is a California based structural engineering firm dedicated to providing quality service and creative design solutions. As part of the New Zealand based Holmes Group, we are an international practice with over 300 professionals in six offices, providing engineering expertise to clients along the West Coast and throughout the Pacific Region.

We are seeking structural engineers with 5+ years design experience for both our San Francisco and Los Angeles offices; M.S. degree in Structural Engineering and PE license are preferred.

Check us out at www.holmesculley.com and send your resume with cover letter to hr@holmesculley.com

Job Requirements:

- B.S. and/or M.S. Degree in Civil / Structural Engineering.
- 5+ years working in the field of structural engineering.
- Licensed Professional Engineer (PE) in the state of California.
- Seismic design experience or education.
- Verbal communication skills, including listening and questioning.
- Written communication skills, including report writing.
- Coaching/mentoring skills
- Presentation skills to contribute to team talks, and project presentations.
- Time management skills.
- Computer software skills: Intermediate MS Word, Advanced MS Excel, Intermediate ETABS, SAP, Risa (or equivalent).
- Problem-solving skills.
- Sound technical skills: understands structural engineering design principles.
- Team player: works with project team.
- Willing to travel to other locations for periods of time to undertake projects.

VCA Structural – Design Engineer II

Take your career to the next level. You'll be challenged and rewarded while working in a professional and family-oriented culture.

What's in it for you?

- As DEII you'll be responsible for calculations on projects related to **multi-story** residential podium, wrap, **mixed-use**, single family dwellings and/or parking structures. You'll continually **increase your technical** knowledge in the areas of wood design, concrete, masonry, basic code requirements, seismic requirements and more.
- You'll **work with respected** engineers, principals, owners and other stakeholders, etc.
- **Work independently** with minimum over-sight; and demonstrate your ability to effectively train others.
Requirements: Degree in Civil or Structural Engineering and Licensed PE preferred, or commitment to getting your PE within 12 months of working with VCA.
- **Familiarity with:** (REVIT, ETABS, RAM Structural Suite, RISA, SAP90 and Windows programs
- Visit www.vcastructural.com. Position is in Orange, CA
- Of course... we have **outstanding benefits!**
- Compensation is commensurate – DOE & DOQ
- **Email Janet Boydell, Vice President of Staffing:**
janet.boydell@vcastructural.com

Your ad here!

DCI Engineers is a leading structural and civil engineering firm with a diverse portfolio of project types and clients. Our various offices along the west coast and in Texas provide unique and challenging opportunities for our employees to gain experience and develop expertise at a rapid pace. In addition, our vibrant company culture promotes a collaborative approach to design and focuses on providing a rewarding work environment for employees. DCI is also proud to offer a diverse array of benefits to those who are a part of our team. Please check out our website at www.dci-engineers.com to learn more about our company culture, project types, and our focus on service, innovation, and value.

We are currently seeking Structural Project Engineers with at least 2 years of experience and Structural Project Managers with at least 5 years of experience for our San Diego, Irvine and Los Angeles offices. Experience designing and managing concrete, steel, and wood-framed projects is desired. Our focus on client service makes excellent communication and customer service skills a must. The position will involve the design of all categories of seismic and gravity framing systems as well as close interaction with clients and other design and construction team members. Work will also include building evaluations, renovations, and seismic retrofits.

Structural Engineering degree from an ABET accredited university and P.E. required.

Your ad here!

Buehler & Buehler Structural Engineers, Inc. is seeking a highly motivated individual to join our management team in our Los Angeles office. B&B's growth into new regions and market sectors has created opportunities for a senior structural engineer looking to move to a new level in their career aspirations. The successful candidate must be a California SE with 15 years' experience covering a broad spectrum of project types. Candidates must possess excellent communication and relationship skills, be local to the region, and have a solid technical background, prior management experience, and the energy and drive to be part of B&B's growth in developing new opportunities in the Los Angeles area.

B&B is a progressive, design-oriented firm with a 70 year history of excellence. We are committed to continuously improve our level of service and quality of our work, and we achieve this through investing in the mentoring and professional growth of our staff.

Qualified applicants are invited to submit their cover letter, resume and references to resumes@bbse.com.



Structural Engineers Association OF SOUTHERN CALIFORNIA

COMMITTEE LEADERS

BOARD OF DIRECTORS

July 1, 2015 - June 30, 2016

The SEAOSC Board of Directors works on the behalf of our membership. If there are general or specific items you would like to see the Board of Directors address or discuss please contact any of the SEAOSC Board members.

President

Michelle Kam-Biron
mkambiron@awc.org
805-498-4864

President-Elect

Jeff Ellis
jellis@strongtie.com
714-738-2029

Treasurer

Robert "Bob" Lyons
blyons@risha.com
818-729-9777

Immediate Past President

Kevin O'Connell
kdoconnell@sgh.com
213-271-1934

Directors

Lorena Arce
arce@aisc.org
562-332-0990

Todd Brown
tbrown@dalechristian.com
714-997-1145

Jeffrey Haight
jhaight@eshse.com
805-963-1210

Colin Kumabe
colin.kumabe@lacity.org
213-482-0447

Edgar Plazola
eplazola@insight-se.com
310-640-0123

Joseph Valancius
valancius@kcse.com
818-240-1919

Paul Van Benschoten
vanbenschoten@coffman.com
818-285-2650

Victoria Wigle
vwigle@thorntontomasetti.com
213-330-7000

SEAOSC Executive Director

Lois Ehrlich
lois@seaosc.org
562-908-6131 ext.173

Get involved! Members are invited to join a SEAOSC committee. Please contact the chairperson for information on current projects and meeting times, dates and locations.

Committees	*Board Contact	Phone	Email
Chair & Vice-Chairs			
Membership	Victoria Wigle*	213-330-7000	vwigle@thorntontomasetti.com
	Kerry Regan	323-536-2363	kregan@bbse.com
	Christian Cody	323-907-2523	christian.cody@hilti.com
Younger Members	Todd Brown*	714-997-1145	tbrown@dalechristian.com
	Nathan Jo	818-441-8014	nathanjo@gmail.com
	Paul St. Pierre	562-754-0258	paulleonsstpierre@gmail.com
Image & Public Relations	Paul Van Benschoten*	818-285-2650	vanbenschoten@coffman.com
	Ken O'Dell	562-985-3200	kodell@mhpse.com
	Samuel Mengelkoch	310-323-9924	smengelkoch@structuralfocus.com
Technology	Lois Ehrlich*	310-437-0555	lois@seaosc.org
	Casey Hemmatyar	888-889-5643	ckh@psfeg.com
Education	Lorena Arce*	562-332-0990	arce@aisc.org
	Daniel Fox	562-985-3200	dfox@mhpse.com
Professional Bus. Practices	Bob Lyons*	818-729-9777	blyons@risha.com
Building Codes & Stds.	Jeff Ellis*	714-738-2029	jellis@strongtie.com
	Carl Sramek	562-799-6010	sramekca@aol.com
Seismology	Colin Kumabe*	213-482-0447	colin.kumabe@lacity.org
	Jesse Karns	562-964-7962	jkarns@sideplate.com
Sub Cmte: Steel Bldgs.	Ashi Dhalwala	310-828-1422	ceginfo@verizon.net
	Edgar Plazola*	310-640-0123	eplazola@insight-se.com
Existing Buildings	Daniel Zepeda	213-596-5000	dzepeda@degenkolb.com
Disaster Emergency Svcs.	Joseph Valancius*	818-240-1919	valancius@kcse.com
	Doug Litchfield	818-913-3558	dlitchfield@mwdh2o.com
Quality Assurance	Bob Lyons*	818-729-9777	blyons@risha.com
Legislative	Kevin O'Connell*	213-271-1934	kdoconnell@sgh.com
Sustainable Design	Jeff Haight*	805-963-1210	jhaight@eshse.com
EPRS Ad Hoc	Leo Torres	818-844-1969	torres@kcse.com
Summit	Victoria Wigle*	213-330-7000	vwigle@thorntontomasetti.com
	Annie Kao	714-738-2092	akao@strongtie.com
	David Williams	213 596 4992	dwilliams@degenkolb.com

▼ *Please visit*

<http://seaosc.org/about-structural-engineering/committees>

to view the annual committee charges and tasks.