

# SEAOSC

# NEWS

Structural Engineers Association of Southern California,  
5360 Workman Mill Rd., Whittier, CA 90601

Tel: (562) 908-6131 Fax: (562) 692-3425 E-mail: seaosc@seaint.org Website: www.seaosc.org



December 2007

## President's Message

By Fred Schott, S.E., P.E., SECB



Last month we noted that there are a large number of **SEAOC** (Structural Engineers Association of California) members who are active in the code writing area at the National level. Examples are as follows:

### NCSEA (National Council of Structural Engineering Associations)

NCSEA Board: *Jim Malley*, Secretary  
SEAOC NCSEA Member Delegate: *Bill Warren* and alternate *Norm Scheel*

**NCSEA Committees:**  
Code Advisory Committees:

Steering Committee: *Ron Hamburger*, chair

Seismic Provisions: *Martin Johnson*, chair, *Rafael Sabeli* voting member position

General Engineering, Materials, Wind and Other Loads and 1 & 2 Family Residence: *Steve Kerr*, member

Existing Buildings/Structural Retrofit: *David Bonowitz*, chair and *David Pomerleau*, members  
Quality Assurance Provisions: *Art Dell*, member

Advocacy Committee: *Dave Adams*, member

Licensing: No SEAOC members listed

Continuing Education: *Dan Novak*, member

(Continued on Page 3)

## Seminars To Be Held Dec. 5 & 12

The following Practical Design & Detailing (PD&D) Seminar and Dinner Meeting will be held Dec. 5 for the L.A. Chapter: *Geotechnical Investigations: Report Contents, Jurisdictional Requirements and Changes with the 2007 Calif. Building Code* by Martin B. Hudson,

Ph.D., G.E., Chief Engineer, MACTEC Engineering & Consulting; and *Geotechnical Inspection During Construction: Protocols, Tests and Requirements by Calif. Building Code and Southern Calif. Jurisdictions* by Martin B. Hudson, Ph.D., G.E., Chief Engi-

(Continued on Page 5)

## L.A. Dinner Meeting

Wednesday, Dec. 5

**Program:** Part 3 of PD&D: Design & Application of Helical Anchors

**Speaker:** Kenneth Drake, Advanced Support Technology, Inc.

**Location:** Luminarias Restaurant, Monterey Park

**Time:** 5 p.m. Social Hour  
6 p.m. Dinner  
7 p.m. Program

**Menu:** Prime Rib of Beef. Vegetarian available if requested by Noon, Dec. 3.)

**Cost:** \$30 (Full-time student: \$15)  
(See blue insert for reservation form and details.)

## Orange County Dinner Mtg.

Wednesday, Dec. 12

**Program:** Part 3 of PD&D:  
The 2006 IBC

**Speaker:** Dr. S.K. Ghosh, S.K. Ghosh & Associates

**Location:** Costa Mesa Country Club, Costa Mesa

**Time:** 5 p.m. Social Hour  
6 p.m. Dinner  
7 p.m. Program

**Menu:** Buffet

**Cost:** \$30 (Full-time students: \$15)  
(See orange insert for reservation form and details.)

# December & January Calendars

## DECEMBER

4	4 p.m.	Existing Buildings Committee	Teleconference
5	Noon 3:30 p.m. 5 p.m.	Board of Directors Meeting LA Chapter PD&D Seminar LA Chapter Dinner	Luminarias Restaurant, Monterey Park Luminarias Restaurant, Monterey Park Luminarias Restaurant, Monterey Park
6	6 p.m.	Sustainable Design Committee	Teleconference
11	4 p.m.	Foundations Committee	Teleconference
12	3:30 p.m. 5 p.m.	PD&D Seminar OC Chapter Dinner	Costa Mesa Country Club, Costa Mesa Costa Mesa Country Club, Costa Mesa
13	1 p.m. 3 p.m. 5:30 p.m.	Testing Standards Committee Light Frame Performance Com. Disaster Emergency Cmte	SEAOSC Offices, Whittier SEAOSC Offices, Whittier Teleconference
26	Noon	February Newsletter Deadline	

## JANUARY

3	6 p.m.	Sustainable Design Committee	Teleconference
8	4 p.m.	Existing Buildings Committee	Teleconference
9	Noon 3:30 p.m. 5 p.m.	Board of Directors Meeting LA Chapter PD&D Seminar LA Chapter Dinner	Luminarias Restaurant, Monterey Park Luminarias Restaurant, Monterey Park Luminarias Restaurant, Monterey Park
10	5:30 p.m.	Disaster Emergency Cmte	Teleconference
15	2 p.m. 4 p.m.	Quality Assurance Committee Foundations Committee	SEAOSC Offices, Whittier Teleconference
16	3:30 p.m. 5 p.m.	Tri-Counties PD&D Seminar Tri-Counties Chapter Dinner	Radisson Hotel, Santa Maria Radisson Hotel, Santa Maria
22	12:30 p.m. 1 p.m.	Code Committee Lunch Code Committee Meeting	SEAOSC Offices, Whittier SEAOSC Offices, Whittier
23	Noon	March Newsletter Deadline	
26	8 a.m.	Macro Seminar	The Grand Event Center, Long Beach

# President's Message *(Continued From Page 1)*

By Fred Schott, S.E., P.E., SECB

Publications: *John Kiland*

Structure Magazine Editorial Board:

Case Representative:

*John Mercer ND, Steven Schaefer OH and Stephen Schneider OR*

NCSEA Representative:

*Craig Barnes MA, Richard Hess (SEAOC) CA and Greg Schindler, WA*

SEI Representatives:

*Matt Salveson.CA Brian Leshko PA and Evans Mountzouris CT*

Industry Representatives:

*Dan Falconer ACI, Bill Liddy AISC and John Showalter AFPA*

## **ICC International Code Council:**

IBC-S International Building Code Structural Committee: *Norm Scheel-western, James Robinson*, southern US and no one for Eastern

IEBC International Existing Building Committee: *David Bonowitz?*

IRC-BE International Residential Code Building & Energy Committee: currently no SE's

ICC ES Industry Advisory Committee: *Ron Hamburger*

## **SEI Structural Engineering Institute of ASCE**

SEI Board of Governors: *Rawn Nelson*

SCC Structures Congress Committee: *Rawn Nelson*

BPAD Business and Professional Activities Division Committees:

Executive Committee (EXCOM): *Rawn Nelson*, chair

Business Practices Committee (BPC): *Tim Frye*, member

Professional Activities Committee (PAC): *Carl Josephson and John Shipp*, members

Public Relations Committee (PRC): *David Cocke*, chair

Design Practices Committee (DPC): *Brent Nuttall*, chair

## **BSSC Building Seismic Safety Council:**

Scope and Format: *Bill Holmes*, chair, *Ron Hamburger, John Gillengerten*

General Design and Protective Systems: *Charlie Kircher, Martin Johnson, Joe Maffei*, corresponding members – *Len Joseph, Gary Searer, Saif Hussain, Kit Miyamoto*

Ground Motion Mapping & Geotechnical: *Tom Hale?*

Concrete: *Jack Moehle, Joe Maffei*, corresponding-*Rene Luft*

Masonry: *John Kariotis & John Kiland*

Steel & Composite: *Jim Malley*, chair – *Mark Saunders, Chia-Ming Uang*

Wood: *Kelly Cobeen*, chair, *Rawn Nelson, Robert George, Fary Mochizuki, Jim Mahaney, Bob Chittenden*

Non-building Structures and Non-structural Components: *Bob Bachman*

Special Task Groups:

Performance Criteria Task Group:?

Design Parameters: *Bob Bachman*, chair and *Charlie Kircher*

Foundations, Base Plates and Anchors: *Martin Johnson*, chair and *John Gillengerten*

On another matter, the Technical Sessions at the recent SEAOC Convention at Squaw Creek included 30 presentations plus 14 unedited papers. Many of these presentations/ papers do an excellent job of clarifying portions of the new codes or present methods of applying known technology to satisfy the new codes. There are a few new techniques for solving a particular class of problems where new equations are generated. The complexity of these equations is consistent with the complexity of most of the equations in the codes. This brings to mind a sentence in Ed Wilson's personal remarks in his 4<sup>th</sup> Edition of the "Static & Dynamic Analysis of Structures" where he quoted his freshman physics instructor's warning "do not use an equation you cannot derive". I doubt that many of us could derive most of the equations we use to satisfy code requirements.

You cannot pick up and read any of the regular technical magazines without seeing at least one article bemoaning the fact that an increasing

*(Continued on Page 5)*

## New Members

**Fischetti, Ben;** *Member;* Penfield & Smith, Santa Barbara; btf@penfieldsmith.com

**Livermore, Jeremy David;** *Member;* DMJM H&N /AECOM, Orange; Jeremy.Livermore@dmjmhnaecom.com

**Moon, Henry H.;** *Member;* Moon & Associates, Los Angeles; henry@moon-associates.com

**Moon, Samuel S.;** *Member;* Moon & Associates, Inc., Los Angeles; sam@moon-associates.com

**Peterson, Debra;** *Member;* URS Cash & Associates, Huntington Beach; debra\_Peterson@urscorp.com

**Yip, Raymond Sau-Lok;** *Industry Member;* iLevel Trus Joist Commercial, Irvine; Raymond.sau-lokyip@weyerhaeuser.com

**Yu, Philip Junior;** *Associate Member;* JCE Structural Engineering Group, Inc., Pasadena; Philip@jcesegroup.com



DOES SEAOSC have your  
current Email address?  
Go to SEAOSC.org  
and make sure.  
It's *vital!*  
Log in using your username  
and password (which ap-  
peared on your dues invoice).

## In Memoriam

John K. Minasian

John K. Minasian passed away at his home in Dana Point Oct. 20 at age 94.

Born in Alexandria, Egypt, John immigrated to the United States at age 3. He was raised in New Jersey and attended the City College of New York. He moved to Los Angeles in 1935 and became a student at Caltech, earning a B.S. and M.S. in Civil Engineering.

After working during the war years for L.A. Water & Power and the Building Department, John established a structural engineering practice in 1947. He engineered many notable projects including the Space Needle for the 1962 Seattle World's Fair. He was appointed a member of the California Board of Civil & Professional Engineers and served as its president. He was also a professor of engineering at Cal State University, Los Angeles.

After living and working in Pasadena and Long Beach for many years, John retired to Orange County where he enjoyed reading history, keeping up with current events, and playing backgammon.

He is survived by his beloved wife of 68 years, Aurora, son Lawrence of Pasadena, daughter Brenda Carpenter of Long Beach, three grandchildren and two great grandchildren.

## Seminars To Be Held Dec. 5 & 12 *(Continued From Page 1)*

neer, MACTEC Engineering & Consulting. Following dinner, *Introduction to Design and Application of Helical Anchors* by Kenneth B. Drake, Advanced Support Technology, Inc. will be presented.

The following PD&D Seminar and Dinner Meeting will be held Dec. 12 in Costa Mesa for the Orange County Chapter: *International Building*

*Code (IBC) 2006* by S.K. Ghosh, Ph.D. and Susan Dowty, S.E. of S.K. Ghosh and Associates, Skokie, IL. They will speak on the subject for the entire afternoon and dinner sessions of the seminar.

Please use the enclosed registration flyers to register or go to [www.seaosc.org](http://www.seaosc.org) for secure online registrations.

---

## President's Message *(Continued From Page 3)*

number of engineers are totally dependent upon computers to give them answers to analysis/design problems where they have no idea whether the answer is within a mile of the correct solution. Professor Wilson's remarks regarding this problem are right on: "Do not use a structural analysis program unless you fully understand the theory and approximations used within the program" and

"do not create a computer model until the loading, material properties and boundary conditions are clearly defined".

We should all keep these marks in mind, particularly those of us who are mentoring our younger engineers.

See you next month.

---

## Are We Having Fun Yet?

By Matt Jones, P.E., Peninsula Engineering Company; member of SEAOSC's Business, Operations and Practices Committee

Some of the most constructive changes I have made to my own business are when I am not having fun and ask myself why? Last month's article "*Life Is Too Short For Bad Clients*" by John O. Schuricht, S.E., and the list of "red flags" reminds us that the business of engineering is often times more about business than engineering. A good job begins with a good contract and the fun of structural design is realized as you witness a smooth progression from calculations to occupancy. Potential problems need to be discovered before you agree to provide engineering services. Discovery of "red flags" and screening jobs be-

comes especially critical for the success and satisfaction of providing a structural design. We should all make our engineering effort as fun as possible. Have you noticed good Businesses have good clients? I hope the days are gone that I agree to design a simple beam, only later to discover the beam is required to support a complex combination of vertical and lateral loads. As you discover "red flags" you will likely lose jobs, but you won't lose the fun ones. As Henry Ford said, "Business is never as healthy as when, like a chicken it must do a certain amount of scratching for what it gets".

# Legislative Committee Report

By Richard Hess, Chair, SEAOSC Legislative Committee

If you would like to “give back” to your chosen profession, and forge some networking links at the same time, consider the SEAOSC Legislative Committee.

Our State Legislators all belong to a number of committees. Of particular interest to SEAOSC are the Judiciary Committees (dealing with liability and contract law), Health and Human Services (hospital seismic safety), Labor and Industrial Relations (Senate) or Labor and Employment (Assembly) (dealing with personal service contracts), Business and Professions (BOPELS, licensure), Local Government (Public works contracts, design-build), Education and Higher Education (Field Act, school contracts,

design-build).

Our SEAOC liaison does an excellent job of keeping current with what is happening in our state legislature in Sacramento, but we also need the local touch. We need to let our representatives know that pending legislation is important to our populace. Educate them. Nurture them.

I have a list of local State Senators and Assembly Members who sit on these committees of interest. You can call me at (562) 799-9787 or go on-line at <http://www.leginfo.ca.gov/yourleg.html> to find your legislators by entering your zip code. Other legislature information, committee membership, statutes, bill information, publications, etc. can also be accessed at [leginfo.ca.gov](http://leginfo.ca.gov).

---

## SEAOSC Disaster Emergency Services (DES) Committee Report

### Keep Contact Info Updated!

In order for SEAOSC DES to call Safety Assessment Program (SAP) Evaluators for a post-disaster response, it is critical that evaluators update their contact information at the following sites:

1) SEAOSC: Go to [www.seaosc.org](http://www.seaosc.org), click on “Member Login.” Note: Your login user name and password appeared on your last SEAOSC invoice.

2) California Office of Emergency Services (OES): Go to [www.oes.ca.gov](http://www.oes.ca.gov), click on “Response” tab, and then “Safety Assessment Program” and then the “SAP Updates” link, and then finally “SAP Evaluator Update”.

### Be at the Ready

Get your “Go Pack” and deployment material ready. Look for the insert in this newsletter.

### Oct. 11 and 13 DES Events

The SEAOSC DES committee had a successful teleconference meeting with several SEAOC SAP

Evaluators Oct. 11. The conference call covered post-disaster procedures, California OES updates, training events, and Urban Search and Rescue. Thank you teleconference participants for your valuable input and time.

Twenty individuals were trained at another SAP Evaluator Training Event Oct. 13. These individuals included Orange County sheriffs, engineers from San Diego and Santa Barbara, and even engineers from as far away as Nevada and Arizona. Doug Litchfield and Mikael Gartner would like to thank the participants for their time and commitment to the Post-Disaster Response Program.

For additional information about the SEAOSC Disaster Emergency Services (DES) Committee visit [www.seaosc.org](http://www.seaosc.org) or contact Doug Litchfield, Chair at [dlitchfield@mwdh2o.com](mailto:dlitchfield@mwdh2o.com). For the SEAOSC DES US&R subcommittee, contact Mikael Gartner, Co-Chair at [mgartner.structural@yahoo.com](mailto:mgartner.structural@yahoo.com).

# Structural Specialists Sought for Post-Disaster Response

The Urban Search & Rescue (US&R) Subcommittee of the SEAOSC Disaster Emergency Services Committee (DES) is seeking structural specialists (StS) for Los Angeles County (CA-TF2), Riverside County (CA-TF6), and Regional Task Force 4 (RTF4).

The FEMA Task Forces (TF) are a specially-trained and equipped 70-person Urban Search and Rescue Task Force consisting of Fire Department firefighters and paramedic rescue specialists, emergency room physicians, structural engineers, heavy equipment specialists, canine search dogs and handlers, hazardous materials technicians, communications specialists, and logistics specialists. This unique technical rescue team responds with prepackaged search and rescue tools and medical equipment to conduct around-the-clock search and rescue operations at domestic and international disasters, both natural and man-made.

An integral part of the US&R team is the structural specialist. The structural specialist provides technical assistance covering exterior evaluation, shoring, breaching/breaking, heavy lifting, and protecting the search team from dangerous structural conditions.

The FEMA Task forces have been involved with national disaster events such as Oklahoma City Bombing, World Trade Center, Northridge, Hurricane Katrina, and several other disaster events.

Regional US&R Task Forces (RTF) are local teams that are coordinated and managed by the California Office of Emergency Services and respond to local disaster events with the same equipment and capabilities as the FEMA Task Forces.

RTF 4 covers the Los Angeles area in the cities of Pasadena, Glendale, Burbank, Alhambra, San

Gabriel, San Marino, Arcadia, Monrovia, Monterey Park, South Pasadena, and Sierra Madre.

Engineers will be trained in rescue systems, including: structure type and damages, interior and exterior shoring, heavy equipment rescue, and breaching/breaking. For more information visit [www.disasterengineer.org](http://www.disasterengineer.org)

Engineers interested in applying for the structural specialist position should have a minimum of 5 years experience in structural design, and be a licensed professional or structural engineer,

Currently there is a need for additional Structural Specialist personnel in the following three Southern California areas: LA County, Riverside County and the Regional Task Force 4 area. Interested applicants should forward their resume to the following contacts respectively:

Los Angeles County FEMA CA-TF2: Keith Martin, SE, StS ([keithwmartin@sbcglobal.net](mailto:keithwmartin@sbcglobal.net))  
Riverside County FEMA CA-TF6: Karl Sauer, PE, StS ([karlsauer@yahoo.com](mailto:karlsauer@yahoo.com))  
Regional Task Force 4: Rodney Spears, SE, StS ([rodneyspears@earthlink.net](mailto:rodneyspears@earthlink.net))  
Long Beach USAR: James Underwood ([james\\_underwood@longbeach.gov](mailto:james_underwood@longbeach.gov))  
City of Vernon USAR: M Wilson ([mwilson@ci.vernon.ca.us](mailto:mwilson@ci.vernon.ca.us))

For additional information about the SEAOSC Disaster Emergency Services (DES) Committee visit [www.seaosc.org](http://www.seaosc.org) or contact Doug Litchfield, Chair at [dlitchfield@mwdh2o.com](mailto:dlitchfield@mwdh2o.com) . For the SEAOSC DES US&R subcommittee, contact Mikaël Gartner, Co-Chair at [mgartner.structural@yahoo.com](mailto:mgartner.structural@yahoo.com).

# YM Seeks Support for Job Fair, Scholarship Night

## Message from the Chair

By Lucas Floriani, P.E.

With a fantastic year from YM coming to a close, our members and officers are gearing up for our events in 2008. This year we were able to accomplish many goals. Attendance at our meetings is up, our officer core has expanded to 12, we hosted six meetings, three field trips, and three social events, including a trip to Las Vegas.

## Student Chapter Involvement

Two of the key goals established for our committee this year are progressing. With the appointment of four student liaisons, SEAOSC Young Members is really hoping to expand the involvement of our student chapters in our activities in 2008.

## PD&D Involvement

Our second focus has been to get our more tenured members involved in SEAOSC's Practical Design & Detailing (PD&D) seminars. In 2008 we hope to have our members partner with our PD&D program in the hope of developing our technical trainers of the future.

## Scholarship Night Wednesday, Feb. 6, 2008

This upcoming year, we hope our Scholarship Night will become one of the greatest ever. We have high hopes for the scholarship amounts and also for attendance. Please mark your calendars -- whether you are a practicing professional or a student -- to be part of this great night. We need as many students to come out as possible and network with their future employers, and we also want our professionals to come out in droves and make our student members feel welcome.



This year's event has a bit of a twist when compared to previous years. This year we

will be having a structural engineering job fair for students prior to the reception.

## Job Fair Booth Info for SE Offices

If your office is interested in setting up a booth, please contact our scholarship coordinator as soon as possible as space will be limited. (Marco Ibarra: [mibarra@bwsmithse.com](mailto:mibarra@bwsmithse.com), (213) 422-4184). Sponsorship of a job booth will be a great way to support our scholarship night and also interact with our students and your future employees.

## Free Event for Students

The night is totally free for students, so mark your calendar and please join us. This is a great opportunity to rub elbows with professionals and learn about the career opportunities that await you upon completion of your degree. I look forward to seeing everyone of Feb. 6, 2008. Let's make this event a success.



# Young Members (YM) Committee Thriving

## CAL vs. UCLA football game

This past Saturday, October 20, was our first trip to an NCAA football game and what a treat it was. 31 SEAOSC Young Members came out to the event. The event began early in the morning with a tailgate prior to the game where our members had a chance to relax, mingle, and take in the sun on a beautiful day in Pasadena, CA. At noon, our members headed into the game to watch a close battle that eventually ended with a victory for the home UCLA Bruins. SEAOSC YM Chair and CAL grad Lucas Floriani was a wreck, but the group had a great time. We are looking forward to an even larger event next year !!!!



# FRF's First International Student Paper Competition in Honor of Prof. Mehdi Ghalibafian

**Theme:** Seismic Retrofit of Structures

**Deadline** for Application Form & Abstract:  
June 1, 2008

**Deadline** for Full Paper:  
Sept. 1, 2008

**Who can enter?** Current graduate students or those who graduated during the past academic year.

The Fanni Reunion Foundation, Inc. (FRF) announces its First Graduate Student Paper Competition.

The FRF's objectives for this competition include:  
(1) To motivate graduate students and young professionals to produce original and noteworthy work that contributes to the betterment of human welfare.

(2) To promote research and active involvement of students in the field of seismic retrofit of structures. Such research is of vital importance due to the fact that earthquakes have caused approximately half a million fatalities during the past decade and over 8 million fatalities during the past millennium.

(3) To acknowledge the services of the Late Mehdi Ghalibafian, PhD, SE, an outstanding professor of Civil Engineering Department at **Fanni**, University of Tehran, and a respected professional and researcher in the field of seismic retrofit of structures.

The winner of the competition will be invited to present his/her paper at one of the FRF lecture series in Los Angeles. A \$1,000 cash award and a plaque of recognition will be presented to the winner in the annual FRF Gathering. Two other runner-ups will be recognized at the annual FRF gathering as Honorable Mention with a certificate. The extended abstract of the winning paper will

be published in the FRF newsletter and website, and any third party publication. Conditioned on release of copyright, the paper will be published in the FRF newsletter and website.

For information on the competition, visit:  
<http://www.fannireunion.org>

Have you visited  
SEAOSC's new website?

<http://www.SEAOSC.org>

Log in using your user name and password  
(which appeared on your dues invoice).

You can edit all your information such as address, phone and Email. You can pay dues, buy publications, register for seminars and get immediate confirmation.

*CHECK IT OUT!*



# Advertisements



9845 SANTA FE AVE. EAST  
P.O. BOX 402563  
HESPERIA, CA  
92340-2563



## **THE PREFABRICATED SHEAR WALL SYSTEM**

*Greatest Design Flexibility - Most Economical – Simplest Installation*

**Agency Listed: ICC-ES 1727 & COLA RR 25369**

### **WITH FEATURES NOT AVAILABLE FROM OTHER SYSTEMS:**

- Custom Panel Heights From 6' to 20' Tall  
Specify **ANY** Height You Need. Only A 5-Day Lead Time  
**CUSTOM is STANDARD at SHEARMAX**
- 9 Standard Widths From 16" to 48"
- Field-Trimable (TRIM-FIT) Panels for Raked Walls
- Consistent, Ductile, Inelastic Response No Matter What Height  
(Yes, the 20 footers) or Aspect Ratio (Up to 18.3)
- #1 In Real Field Service – Reliable and Free – Just call Toll Free

### **AND, ADDITIONAL FEATURES THAT MAKE IT THE EASIEST SYSTEM TO SPECIFY**

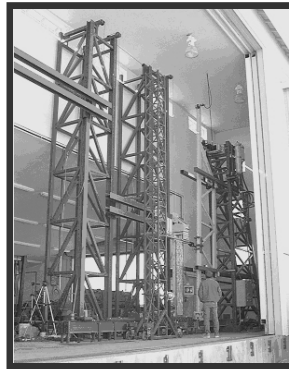
- Raised Floor Application Panels
- Post-Installed Applications for Remodels & Retrofits
- Custom Heights & Raked Wall Eliminate The Need To Create Special Designs & Detailing

### **WHO IS SHEARMAX?**

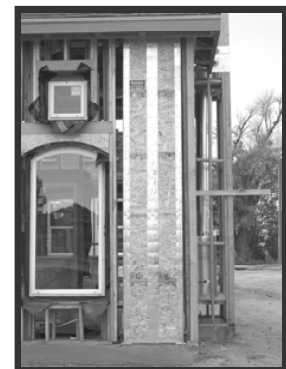
- Maker of the SHEARMAX Panel System
- Holder of the First ICBO Listing (July 1998) for a Prefabricated Wood Shear Panel
- 10 Acre Manufacturing Plant including 35,000 Sq. Ft. Under Roof Located in Hesperia, California
- Automated Manufacturing to Ensure the Highest Level of Quality Control Possible
- On Site IAS Accredited Test Facility



**TRIM-FIT PANEL**



**IAS TEST FACILITY**



**CUSTOM HEIGHTS**

**tel 877.743.2762**

**fax 760.948.5330**

**web [www.SHEARMAX.com](http://www.SHEARMAX.com)**

# Advertisements



## Seeking talented and self-motivated individuals for our Pasadena & Newport Beach Office

Saiful/Bouquet (SB) is an award winning, innovative structural engineering firm engaged in providing high quality integrated design solutions to national and international clients.

SB employs a staff of over 55 professionals driven by a shared vision to help clients succeed. Our innovative, cost-effective approach is evidenced by our many awards, extensive portfolio of projects and loyal client base.

Our expertise encompasses the following market areas:

- International
- Healthcare
- Commercial
- Hospitality
- Residential
- Institutional
- High-Rise
- Aviation
- Civic/Justice
- Retail
- Historic Structures
- High-Tech

Saiful/Bouquet (SB) is seeking talented and motivated self-starters to join our expanding team. If you're passionate about structural design, please contact us. Positions available at both the Pasadena Corporate Office as well as the new Newport Beach Branch Office. (Opening January 2008)

### Available Positions:

#### Structural Engineers (Pasadena & Newport Beach)

Multiple positions available at all levels of experience. Strong communication skills a plus.

#### Cad Drafters (Pasadena & Newport Beach)

Multiple positions available at all levels of experience. Desired candidates will have successfully completed a Certified AutoCAD training course and have exposure to structural drawings. Strong communication skills a plus.

SB offers an outstanding work atmosphere with excellent growth opportunities. Salary & benefits package including health insurance, 401k and profit sharing. Relocation expenses for qualified applicants may be available.

Email resumes to [careers@sbise.com](mailto:careers@sbise.com) or fax to (626) 844-6796. For more information, visit our website at [www.sbise.com](http://www.sbise.com).

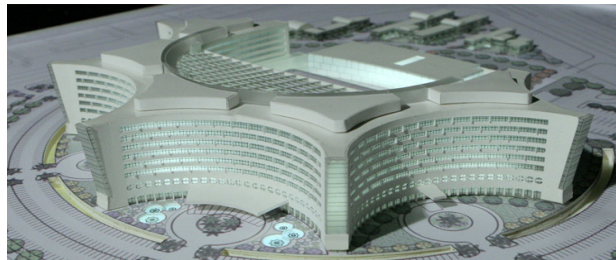
**Corporate Office:**  
385 E. Colorado Blvd., Suite 200  
Pasadena, CA 91101

**Branch Office:**  
20411 SW Birch Street, Suite 350  
Newport Beach, CA 92660

W W W . S B I S E . C O M



## Innovative & Cost Effective Solutions



Advertisements, announcements and inserts are for the information of readers and are not intended as endorsements by SEAOSC.

# Advertisements

## CONTECH

CONTECH SERVICES, INC.

*“Repair, Strengthening & Protection of Concrete Structures”*

Concrete / Masonry Repairs  
Seismic Repairs & Strengthening  
Composite Strengthening – FRP  
Expansion Joints

Epoxy Crack Injection  
Grouting  
Shotcrete – Repairs  
Waterproofing

California

(714)557-6425

Washington

(206)763-9877

Oregon

(503)223-9817

Contractors Licenses: CA # 707880 NV # 0051493

[www.contechservices.com](http://www.contechservices.com)

Contact: Brian Armor

### Lee George Structural Engineers

Lee George Structural Engineers is an award winning consulting firm. Our practice covers a wide range of projects and industries with elite clients.

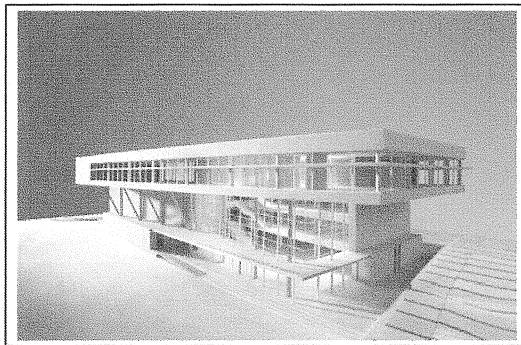
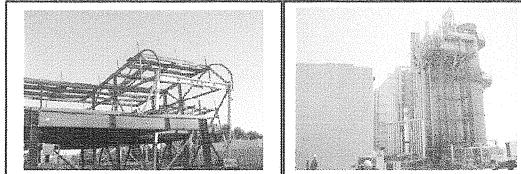
We are seeking Structural Engineers and Drafters who have strong engineering fundamentals, good communication skills, creative in thinking and detail oriented minds.

We offer Challenging and Fast Growing career opportunities for talented structural engineers/drafters, with competitive compensation and full benefits.

We invite you to join us if you are looking for a work place that offers:

- Coworkers who you respect and enjoy to work with
- Flexible work hours - You set your own work schedule
- Tools, supports, and team setting to let you do a good job
- Friendly, upbeat and family like environment

18302 Irvine Blvd., Suite 260, Tustin, CA 92606  
Fax: (949) 552-3330 / email: [career@lg-se.com](mailto:career@lg-se.com)



# Advertisements



## Sr. Plan check Engineer City of Santa Monica

Annual compensation up to approximately **100 k**, which includes a base salary of \$96,288 per year; and professional incentive pay (paid quarterly) + cashable leave days (paid at end of the fiscal year) equaling up to \$3,703 per year. The City participates in California Public Employees' Retirement System (CalPERS) with a 2.7%@55 retirement formula. In addition, the City participates in the Medicare portion of FICA only, and therefore there is no deduction made for social security. The position will also be eligible for a **signing bonus (10% of base salary)**, pending City Council approval, and an annual **performance bonus (up to 10% of base salary)** based on the employee's performance

**Description of Work:** Reviews architectural and structural construction drawings, structural calculations and engineering reports for compliance with construction codes, local ordinances and state laws, and provides clear and understandable written responses related to review.

**Requirements:** Graduation from an accredited college or university with a Bachelor's degree in Architectural, Civil or Structural Engineering or a related field. Four years of recent, paid work experience in structural engineering or plan checking. **Licenses and Certification:** Possession of a valid Class C driver license. Registration as a Civil or Structural Engineer in the State of California. Certification as a Building Plans Examiner-UBC or Certified Building Official from the International Code Council (ICC) within one year from the date of hire. **Deadline: Applications will be accepted on a continuous basis.** Apply at: City of Santa Monica Human Resources Dept., 1685 Main St., P.O. Box 2200, Santa Monica, CA 90407. Phone: (310) 458-8697 or visit [www.santa-monica.org/hr](http://www.santa-monica.org/hr) to apply online.



### where do you want to be?

If you are looking for an award winning company where you will:

- be respected
- be challenged to grow
- enjoy working with your colleagues
- have the opportunity to grow in different branch offices
- work on high profile projects

then come and join the **TMAD TAYLOR & GAINES** team!

We are currently accepting applications from candidates with the following qualifications:

- 7-10 years structural design experience in various building types
- 3-5 years experience in wood, steel, & concrete
- Excellent communication & teamwork skills, and computer proficiency
- California P.E. or S.E. preferred

Interested applicants should send resumes to:

**Ed Gharibans**

e-mail: [egharibans@tmdtg.com](mailto:egharibans@tmdtg.com)

Fax: (626) 351-5319

please visit our website at: [www.tmdtg.com](http://www.tmdtg.com)

Anaheim Ontario Pasadena Phoenix Riverside San Diego San Francisco Thousand Oaks

**Foothill Law & Justice Building**  
ATC 2006 Top U.S. Seismic  
Engineering Award of the 20th Century  
First Base-Isolated Building in the U.S.



**Providence Saint Joseph Medical Center**  
NCSEA 2006 "Finalist" in the Category of New Buildings \$30-\$100 Million  
One of the lightest (19psf) Special Moment Resistance Frame (SMRF) buildings built after the Northridge earthquake

**HOAG Memorial Presbyterian Hospital**  
NCSEA 2006 "Outstanding" Project Award in the Category of New Buildings Over \$100 Million  
First Hospital Built in California with Moment Frames on Base-Isolators



**Patriot High School**  
2006 California & Nevada Concrete Masonry Association Design Award  
Merit Award for Sustainable Design

Advertisements, announcements and inserts are for the information of readers and are not intended as endorsements by SEAOSC.

# Advertisements

**Join the Best and  
the Brightest**



**JCE** STRUCTURAL ENGINEERING GROUP, INC.  
STRUCTURAL & EARTHQUAKE ENGINEERING CONSULTANTS

**Become a  
Leader**

---

Innovative, Cutting Edge & Fast Growing Consulting Structural Engineering Firm in Pasadena has open positions with Growth Opportunities for Engineers with 2 to 15+ years of experience in structural/seismic design of all variety of buildings. Positions range from Structural Drafters, Project Engineers and Project Managers.

Our firm has a Leadership Development Program in place for potential candidates for our next Leadership Generation

- JCE Structural Engineering Group's Leadership has a vision
- JCE Structural Engineering Group offers Excellent Benefits
- JCE Structural Engineering Group invites you to be part of their success
- JCE Structural Engineering Group encourages you to make a difference
- JCE Structural Engineering Group is proud of its High-Quality work

Institutional

Higher Education

Hospitality

K-12

Healthcare

Governmental

---

Send cover letter and resume to: [jobs@jcesegroup.com](mailto:jobs@jcesegroup.com) ; Web Site: [www.jcesegroup.com](http://www.jcesegroup.com)

♦ Quality ♦ Excellence ♦ Innovation

Weidlinger Associates® Inc (WAI) is accepting resumes for the following positions in our expanding Los Angeles office:

**Senior Project Engineers**

5-7 years experience in the design of wood, concrete, masonry and steel, and/or structural investigations/forensic engineering. California PE required, SE preferred.

**Engineers and Senior Engineers**

BS, MS, or PhD degree in civil/structural engineering. Excellent analytical and communication skills required.

**CAD Operators**

Minimum of 5 years structural drafting experience with AutoCAD. BIM modeling experience preferred.

Please e-mail, fax, or mail your resume to:

Weidlinger Associates® Inc  
4551 Glencoe Avenue, Suite 350  
Marina Del Rey, CA 90292  
Phone 310 315.8430  
Fax 310 315.8431  
mail@hart.wai.com



Advertisements, announcements and inserts are for the information of readers and are not intended as endorsements by SEAOSC.

# Advertisements



STRUCTURAL ENGINEERS

**MHP** offers a full spectrum of Structural Engineering services, supporting the **Seismic Risk, Blast & Progressive Collapse Mitigation** and **Traditional Design** markets. We thrive on a Can Do, Want To and Will Do attitude, and take pride in engineering smart.

**MHP** has immediate positions available for new graduates as well as those with up to 7 years of experience. Current positions include Project Engineers for new design of school, retail, and multi-unit housing; Licensed Engineers for structural assessment of existing facilities in both Risk Reduction and Risk Assessment/PML work; and Engineering Analysts for linear and non-linear modeling and interpretation of existing structures.

**MHP** provides excellent opportunities in our recently expanded Long Beach office for those who are passionate about their careers and strive to achieve excellence and success in a collaborative and rewarding environment.

For additional Job Description information and other Available Positions please visit our website at: <http://www.mhpse.com/careers/>.

To join our team, Fax, E-mail or Mail your resumé to:

**MHP**

4500 E. Pacific Coast Hwy, Ste.100  
Long Beach, CA 90804  
ATTN: Ken O'Dell  
Fax: 562.985.1011  
Email: [careers@mhpse.com](mailto:careers@mhpse.com)



## GROSSMAN & SPEER ASSOCIATES, INC.

STRUCTURAL ENGINEERS



[www.grossmanspeer.com](http://www.grossmanspeer.com)



Seeking licensed CE or SE. Excellent benefits, including 401(k) and profit sharing.

Send resume to Loyd Speer at:

Email: [lspeer@grossmanspeer.com](mailto:lspeer@grossmanspeer.com)

Telephone: (818) 507-1020

Fax: (818) 507-1556

## Trussed Inc. Seeks Civil/Structural Engineer in Riverside Area

- Reports To: Licensed Structural Engineer
- Self-starter with 2-4 years experience in structural design of light frame wood construction preferred
- Knowledge of truss design a plus.

Other qualifications:

- familiarity with building codes
- ability to read architectural & structural drawings,
- excellent customer service, verbal, written, & organization skills
- detail-oriented, problem solver
- multi-tasker with follow-up ability
- team player with ability to interface with all levels of management
- able to work in fast-paced environment
- proficient in Word and Excel.

We offer competitive compensation packages based on experience, including a comprehensive benefits program. Please email ([jobs@caltruss.com](mailto:jobs@caltruss.com)) or fax (951) 940-0460 your resume and salary history.

Advertisements, announcements and inserts are for the information of readers and are not intended as endorsements by SEAOSC.



# Advertisements



Based in Van Nuys, CA, we provide services for a variety of project types, including:

**RESIDENTIAL PROJECTS** - Single Family Homes, Remodel projects Apartments, Repairs, Structural reports. / **COMMERCIAL** - New commercial buildings and site improvements, Remodel and rehabilitation of existing buildings, Seismic retrofit, Structural reports. / **LIGHT INDUSTRIAL / FORENSIC / STRUCTURAL CONSULTATION**

We are seeking a qualified candidate to fulfill a position we have for a Licensed Civil or Structural Engineer. Needs to have at least 5 years experience. Also needs to be able to design a 1 to 4-story building from start to finish in Wood, Concrete, Masonry, Steel, or any combination thereof. *Having experience with CAD is definitely a plus.*

Interested candidates can e-mail their resume to [steve@steinbergstructural.com](mailto:steve@steinbergstructural.com), or fax it to 818-782-0379.

**ARCHITECTURAL ENGINEERING** - The Department of Architectural Engineering at Cal Poly, San Luis Obispo, California is seeking applications for full-time, academic year tenure track positions for the teaching of structural analysis, design, and construction of buildings. Starting date is September 8, 2008. Researchers and experienced practitioners are encouraged to apply.

Applications are available at [WWW.CALPOLYJOBS.ORG](http://WWW.CALPOLYJOBS.ORG) and search for Requisition #101422. Review of applications will begin December 17, 2007. Applications received after this date may be considered. EEO. Contact [ccobb@calpoly.edu](mailto:ccobb@calpoly.edu) for additional information.

The logo for KPFF consists of the lowercase letters "kpff" in a bold, italicized, sans-serif font, set against a dark rectangular background.

<b>Los Angeles</b>	<b>Irvine</b>	<b>Pasadena</b>
(310) 665-1536	(949) 252-1022	(626) 578-1121

A black and white photograph showing the steel framework of a building under construction, with various beams and supports visible.

Be **CHALLENGED...**  
Current projects include base isolation, creative seismic retrofit, nonlinear analysis, physical testing, and carbon fiber.

Our independent work environment promotes learning by doing.

**ADVANCE...**  
High Pass Rate for SE's and PE's past 4 years.

Participate in **BUSINESS DEVELOPMENT...**  
Our engineers are in regular contact with our clients, and are a huge part of marketing our services.

Each engineer's personal commitment and management of their own projects is what keeps clients coming back to KPFF.

A black and white photograph showing a construction site with workers and structural elements.



**Next  
SEAOSC  
Newsletter  
Deadlines:  
Dec. 26, 2007  
for  
February 2008  
Issue**

Advertisements, announcements and inserts are for the information of readers and are not intended as endorsements by SEAOSC.

# 2007-2008 SEAOSC Officers and Committee Chairs

Get involved! Members and interested parties are invited to join a SEAOSC committee. Contact the chairperson for information on current projects and meeting times, dates and locations.

## SEAOSC Officers & Board Members

	Name	Phone	Fax	Email
President	Fred Schott <sup>1,2</sup>	805-544-1216	805-544-2004	fredschott@sbcglobal.net
President-Elect	Bill Warren <sup>1,2</sup>	949-722-0185	877-868-6527	bill@sesol.com
Treasurer	Michael Cochran <sup>2</sup>	310-998-9154	310-998-9254	mlcse@aol.com
Secretary	Lucas Floriani	714-814-0882	310-521-9994	lucas.floriani@hilti.com
Immediate Past President	Saif Hussain <sup>1,2</sup>	818-285-2650	818-285-2651	hussain@coffman.com
Directors	Paul Armstrong	562-896-2123	5624207815	parmstrong@interwestgrp.com
( <sup>1</sup> Delegate to SEAOC)	Rami Elhassan	949-389-8700	949-387-0800	rami.elhassan@idsse.com
( <sup>2</sup> Member of Exec. Cmte)	Joseph LaBrie	626-445-0366	626-445-2947	labrie@makeitright.net
	Miro Lhotsky	805-499-4584	805-499-4489	mcldesa@dslextreme.com
	David Johnson	310-827-6872	310-827-6772	jlse@netvip.com
	Jonathan Roberson	951-295-1892	866-801-4975	jon@jsrengineering.com
	John Spiess	805-963-1210	805-564-8865	jspiess@eshse.com

## Committee

	Chairperson	Phone	Fax	Email
Building Code	Carl Sramek	562-799-6010	562-799-6010	sramekca@aol.com
Business Operations & Practice Certification	Juliet DeMoss	310-257-2008	310-534-8082	julietdemoss@caaprofessionals.com
Convention	Bill Warren	949-722-0185	949-722-0661	bill@sesol.com
Disaster Emergency Services	Michael Cochran	310-998-9154	310-998-9254	mlcse@aol.com
Existing Buildings	Doug Litchfield	626-844-5678	626-844-5642	dlitchfield@mwdh2o.com
Field Day	Joseph Valancius	818-240-1919	818-240-4966	jvalancius@wje.com
Foundations	Jeff Crosier	949-579-1170	949-579-1180	jcrosier@miyamotointernational.com
House	Samir Lawrence	626-440-3472	626-440-2262	samir.lawrence@parsons.com
Legislative	Amy Duink	949-271-3300	949-271-3301	aduink@ttengeers.com
Light Frame Performance	Richard Hess	562-799-9787	562-799-4973	rhess@hesseng.com
Membership	Doug Thompson	949-599-0320	949-599-0325	dougt@stbse.com
Professional Practices	David Johnson	310-827-6872	310-827-6772	jlse@netvip.com
Public Relations	Larry Brugger	562-570-7713	562-570-6205	lawrence_brugger@longbeach.gov
Quality Assurance	Michael Cochran	310-998-9154	310-998-9254	mlcse@aol.com
Research	Jonathan Roberson	951-295-1892	866-801-4975	jon@jsrengineering.com
Seaint Website Administrator	Bahram Zarin-Afsar	949-261-6988	949-251-8727	bahram@zarinafsar.com
SEAOSC Website	Shafat Qazi	310-530-3050	310-530-0184	shafat@bqe.com
Seminar	Michael Cochran	310-998-9154	310-998-9254	mlcse@aol.com
Seismology	Bill Warren	949-722-0185	877-868-6527	bill@sesol.com
Social Events	Mehran Pourzanjani	626-304-2616	626-304-2676	mehran@sbise.com
Steel Structures	Ann Duty	714-734-4242	714-734-4171	aduty@absconsulting.com
Student Scholarships	Truong Huynh	562-570-6921	562-570-6205	truong_huynh@longbeach.gov
Sustainable Design	Ashwani Dhalwala	310-828-1422	310-828-1422	ceginfo@verizon.net
Testing Standards(Ad Hoc)	Lucas Floriani	714-814-0882	310-521-9994	lucas.floriani@hilti.com
Younger Member	Mikael Gartner	213-596-5000	213-5965960	mgartner.structural@yahoo.com
SEAOSC Office	Graeme Dick	949-380-3970	949-380-3771	gd@kspeng.com
	Lucas Floriani	714-814-0882	310-521-9994	lucas.floriani@hilti.com
	Don Gilbert	562-908-6131	562-692-3425	seaosc@seaint.org

Structural Engineers Association of  
Southern California  
5360 Workman Mill Rd.  
Whittier, CA 90601

PRESORTED  
STANDARD RATE  
U.S. POSTAGE  
PAID  
TORRANCE, CA  
PERMIT NO. 203