



# Membership Appreciation Event 2015

## Angels Baseball Game

### May 30, 2015



It's that time of year again... Time to celebrate you, SEAOSC Members! Last year we had a blast at Six Flags riding, waterballooning, eating delicious food and networking with our fellow members. This year we invite you to join us for a special celebration as we enjoy America's favorite pastime: Baseball! We have arranged a fun-filled evening to watch the Los Angeles Angels of Anaheim take on the Detroit Tigers on Saturday, May 30. The fun includes not only great seats for the game but an in-stadium pregame social in the centerfield patio area that includes access to the stadium.

It will be an evening the whole family will enjoy. Please see the details below and be sure to sign up at [www.seaosc.org](http://www.seaosc.org) by May 7.

We look forward to seeing you at the event!

Sincerely,  
Nolan Lenahan, PE, Membership Committee Chair  
Kelsey Anne Parolini, SE, Membership Committee Board Representative



## EVENT DETAILS

- Date:** Saturday, May 30, 2015
- Location:** Angel Stadium, 2000 East Gene Autry Way, Anaheim, CA 92806
- Time:** 5:00pm Pre-Game Social  
7:05pm Game (Fireworks following game!)

### Your Ticket Includes:

- Seat in SEAOSC reserved section, Outfield Section 258
- Pregame Social at Centerfield Patio incl. games & activities
- Food (\$30 value)
- Menu: Hot Dogs, Bratwurst, Fruit & Wedge Salads, Assorted Soda and Water, Cookies, Cracker Jacks
- Cash Bar Available, First Drink on Us
- Fireworks display following game
- (Parking not included, \$10 per vehicle)

### Ticket Prices

	Price	Compared to Regular Price
SEAOSC Members:	\$25	(\$35 savings)
Guests and Student Members:	\$45	(\$15 savings)
Children Under 16:	\$20	(\$40 savings)
Children Under 2:	Free	

### Example:

Price for SEAOSC Member & Guest = \$70 (Compared to over \$120 for regular price tickets, food & drink, over \$50 savings!)

Pre-registration required. Register online at [www.seaosc.org](http://www.seaosc.org)

Registration Deadline: **Thursday, May 7**

For more information and to register visit [www.seaosc.org](http://www.seaosc.org)



**REGISTRATION  
NOW OPEN AT  
SEAOSC.ORG**  
Deadline is May 7



## Online Voting for 2015 Officers & Directors

The SEAOSC membership will be asked to vote in May for the nominees for incoming board of directors. Voting members are defined in the SEAOSC Bylaws Article II Membership and include the categories of "Member SE" and "Member". Other membership categories are not eligible to vote in association elections.

Voting will begin in **early May 2015** by Constant Contact email announcement and reply. Electronic ballots must be received by **5 pm, Friday, May 29, 2015**. Election results will be announced at the June 3, 2015 dinner meeting. The newly elected directors will take office July 1, 2015 for a two-year term.

The Nominating Committee, chaired by Senior Past President Joe LaBrie, S.E., announced the following slate of nominations for the 2015-2016 Board of Directors:

Treasurer: **Robert Lyons, S.E.**  
Member SE Orange County: **Todd Brown, S.E.**  
Member SE Tri-County: **Jeffrey Haight, S.E.**  
Member SE: **Victoria Wigle, S.E.**  
Member PE: **Lorena Arce, P.E.**

Officers for 2014-2015, according to succession procedure, will be Michelle Kam-Biron, S.E., President, and, Jeff Ellis, S.E., President-Elect.

Kevin O'Connell, S.E. will continue to serve on the board of directors as the Immediate Past President.

Also continuing on the board of directors will be Colin Kumabe, S.E., Edgar Plazola, S.E., Joseph Valancius, S.E., and Paul Van Benschoten, S.E.

Additional nominations for the office of President-Elect, Treasurer or Director were called for in March, in accordance with procedures outlined in the SEAOSC Bylaws Article VI, Section 2. No additional nominations were received from the membership.

Thank you to the following members of the Nominations Committee who selected nominees in accordance with procedures outlined in the Bylaws Article VI, Section 1:

- Michelle Kam-Biron, S.E.
- Jeff Ellis, S.E.
- Janah Risha, S.E.
- Tim Kaucher, P.E.
- Francisco Garcia, P.E.
- Nils Fox (Industry)
- Doug Thompson, S.E. (Alternate/Observer)
- Joe LaBrie, S.E. (Chair)

Please direct any questions regarding the upcoming election to the SEAOSC office at [seaosc@seaosc.org](mailto:seaosc@seaosc.org).

### APRIL

- 22** ACI 3-18-14 Concrete Code  
TriCounty Dinner Meeting  
Glen Annie Golf Course, Santa Barbara
- 22** 2015 Buildings At Risk  
Informational GoToMeeting for  
Prospective Volunteers
- 29** Finite Element Analysis  
Webinar, GoToWebinar
- 30** Excellence in Engineering Awards  
Deadline
- 30** IBC Essentials for Wood Construction & Design Considerations for Wood Framed Structures  
San Luis Obispo

### MAY

- 6** Los Angeles Dinner Meeting  
Luminarias, Monterey Park
- 8** SEAOSC NEWS Content Submission  
Deadline for June Issue
- 12** The New ASTM A1085 Specification: A New Dynamic for HSS  
Webinar, GoToWebinar
- 15-16** Spring Education Programs  
Westside Conference Center, Pepperdine University
- 29** Board of Directors Election Deadline

### JUNE

- 3** Annual Past Presidents' Night,  
Excellence In Engineering Awards &  
Installation of new Officers  
Luminarias, Monterey Park



#### PAGE

#### IN THIS ISSUE

**2** SEAOSC Board Election

*Features:*

**3** Excellence in Engineering Award  
Deadline Approaches, March New  
Members

*President's Message: Kevin O'Connell*

**5** 2015 Buildings At Risk Call for  
Volunteers

*Upcoming Events*

**6** Member-submitted Case Study

*Classified Ads*



By Kevin O'Connell, S.E.

I don't have to tell you, but the year seems to be flying by quicker than ever. It's almost May! And springtime for SEAOSC means it is time for our member appreciation event. SEAOSC exists for its members and that is reflected in our Vision and Mission statements. I encourage you to re-read those statements where you will read terms like "The organization services its members..." and "SEAOSC is a member-centric organization..." and "...optimization of the benefits to the members." The Board of Directors works carefully and diligently to do what is right for this association, and what is right for this association is what is right for our members. The benefit to our membership is at the center of all of our decisions. The Board appreciates our members, so a few years ago we decided to have an event without any technical presentation, without any educational aspect, but purely for the "camaraderie among members" which is part of our Membership Value mission statement. Two years ago we spent a day at the races at Santa Anita, last year we rode the roller coasters at Magic Mountain, and this year we are taking you out to the ol' ball game. Come with us to an Angel's baseball game on Saturday, May 30. We'll tailgate together at the Centerfield Patio at 5 pm, sit together and watch the game at 7 pm, and then enjoy a fireworks show after the game (rumor is, the fireworks are just for SEAOSC). Registration is open, see the website for additional information. Be sure to sign up by May 7 to that we can have an accurate count.

The Spring Educational Program is also coming up soon. Look for additional information in this newsletter. In addition to a full slate of education engineering topics on Saturday, we are also providing Safety Assessment Program (SAP) training on Friday. We are also excited to have our Spring Education Program and SAP training at a new location on the Westside. I hope you enjoy the new venue, and please be sure to give us your feedback.

Many of our committees are operating on all cylinders and doing great things. If you want to get involved in SEAOSC, I encourage you to look into one of our com-

mittees. It is an easy way to participate, and you can tailor your participation to fit your schedule! SEAOSC is always looking for people to bring fresh energy and ideas to our committees. Whether your interests are technical (Seismology, Existing Buildings, Codes and Standards) or non-technical (Membership, Education, Image and Public Relations), there is a committee for you. Take a look at the end of this newsletter and give the committee chair or board contact a call.

There are a couple of important SEAOSC items coming up for our members. The first is voting for the next SEAOSC Board of Directors. Voting information will be coming out soon.

The second is submitting one of your projects for the SEAOSC Excellence in Structural Engineering (EISE) awards. Entries for our annual awards program are due at the end of April, just a couple weeks away. I have always found our EISE awards to be a very important aspect of what SEAOSC does. Earlier in this message, I wrote about our Vision and Mission. Our Vision includes "...promoting the contributions of structural engineers to society." What a better way to promote structural engineers contributions to society than by acknowledging the incredible projects that our members have engineered. There are many categories, both small and large projects are considered, so I encourage you to take your best project or two and enter them into the SEAOSC EISE awards (and later in the SEAOC awards). Recognition amongst your peers is well worth it, and recognition amongst your clients is valuable.

I hope you have been taking advantage of all that SEAOSC has to offer, from our educational programs and webinars, to our monthly meetings, to our membership appreciation event. The Board is always working for you, if you have any questions please feel free to reach out to a Board member.

Respectfully,  
Kevin O'Connell, S.E.  
SEAOSC President

## Deadline Approaches- April 30, 2015: Excellence In Structural Engineering Awards

The annual SEAOSC Excellence in Structural Engineering Awards program is dedicated to publicly acknowledging outstanding achievements in creative design, technical innovation, best practices and demonstrated contributions to both the public and the structural engineering profession.

The awards program honors the on-going commitment to advancing the art and science of structural engineering for both the built environment and public safety.

The rules and regulations for the annual awards program can be obtained by downloading the entry packet from [www.seaosc.org](http://www.seaosc.org).

**Entry date submission deadline: 5:00 pm, April 30, 2015 at Simpson Gumpertz & Heger, Los Angeles.**



**WELCOME**  
**NEW MEMBERS**

March 2015

### Industry

**Vince Benitez**

Specialized Testing, Inc.

[vbenitez@specializedtesting.com](mailto:vbenitez@specializedtesting.com)

### Associate Level 1

**Michael Tsai**

KPFF Consulting Engineers

[miketsai19@gmail.com](mailto:miketsai19@gmail.com)

### Students

California State University, Irvine

California State Polytechnic University, San Luis

Obispo

University of Southern California

University of California, Los Angeles

Clemson University, South Carolina

Case Western Reserve University, Ohio

# STRENGTHENING OUR CITIES BAR SUMMIT

**VOLUNTEERS  
NEEDED**

## Volunteers Needed for 2015 Buildings At Risk Event

The 5th annual Buildings at Risk (BAR) Summit has started planning for another great event this year! Every year, the BAR Summit, presented by SEAOSC, brings together community leaders to present resources and tools for building owners, businesses, and government officials to understand the risks they face and how to mitigate losses.

SEAOSC is looking for volunteers to contribute to this year's planning effort! We have volunteer opportunities to fit any schedule, so now is the time to learn how you can impact this annual event.

We will be holding an informational meeting via [GoTo Meeting](#) on **April 22 at 4pm**, where we will discuss the goals of this year's summit, the planning that has happened to date, and the future roadwork needed.

If you or other industry professionals would like to participate in the event planning, please email [seaosc@seaosc.org](mailto:seaosc@seaosc.org) to indicate your interest, or ask any questions. We look forward to your response and speaking with you soon!



*Please see details about the 2014  
BAR Summit: Strengthening Our Cities at [barsummit.org](http://barsummit.org)*

Below is a question from SEAOSC member, John Liao, seeking additional information on this case study. Please contact the SEAOSC office with comments or questions and we can pass on to Mr. Liao.

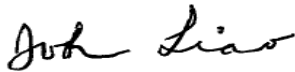
Please advise:

3-story wood frame building with 2 decks on 2nd floor, one side of the deck is a 42 in. high handrail (diagram available for those who inquire). This is about lateral Seismic analysis. The story shear at each floor/roof level is obtained from the base shear formula. (56k, 84k, and 114k respectively), the shear force on col. Line A at roof level is 14k. The unit shear stress in the 4 resisting shear panels (neglecting 2 windows and 2 open decks) is as calculated (see diagram).

Question: On deck area, would it be better to provide a strut (collector) at roof level on col. Line A tying together the two parts of the structure? (42 in high handrail is not assumed to transmit the shear force effectively.)

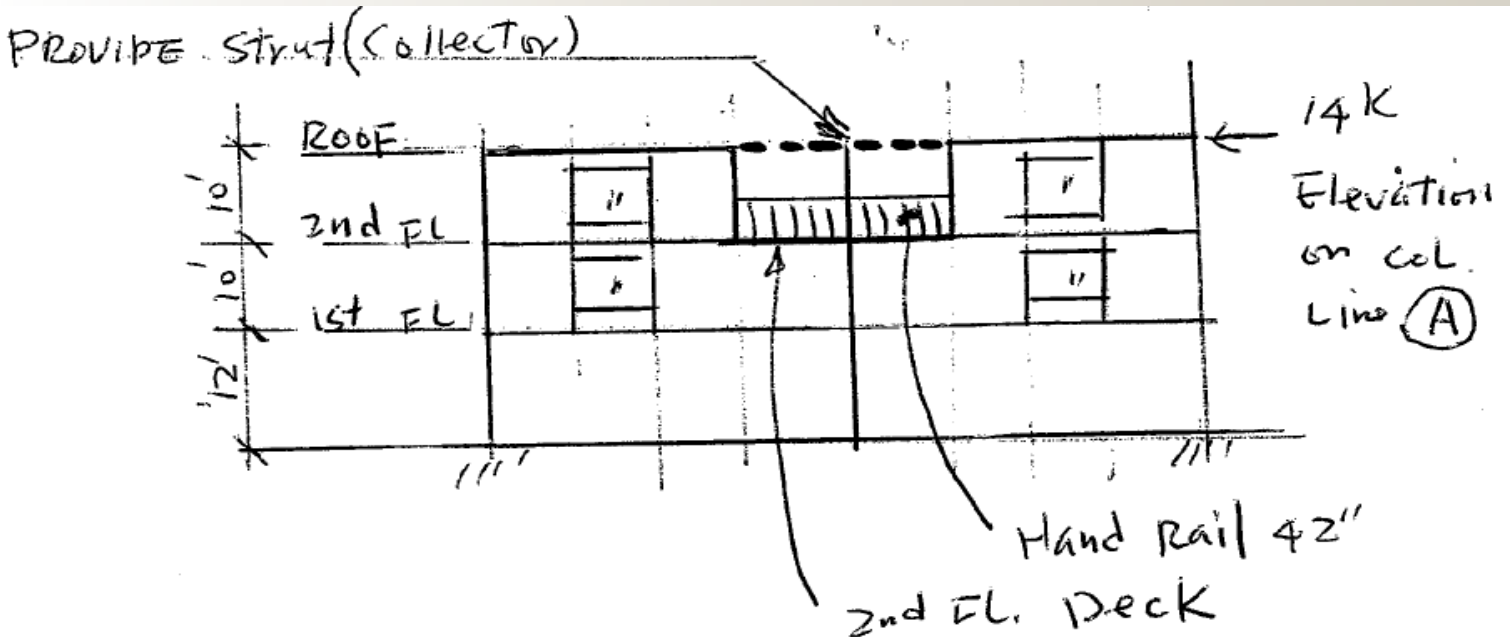
On the other hand, without providing strut as shown originally, the unit shear stress (0.586k) calculation is o.k.ed?

Sincerely,

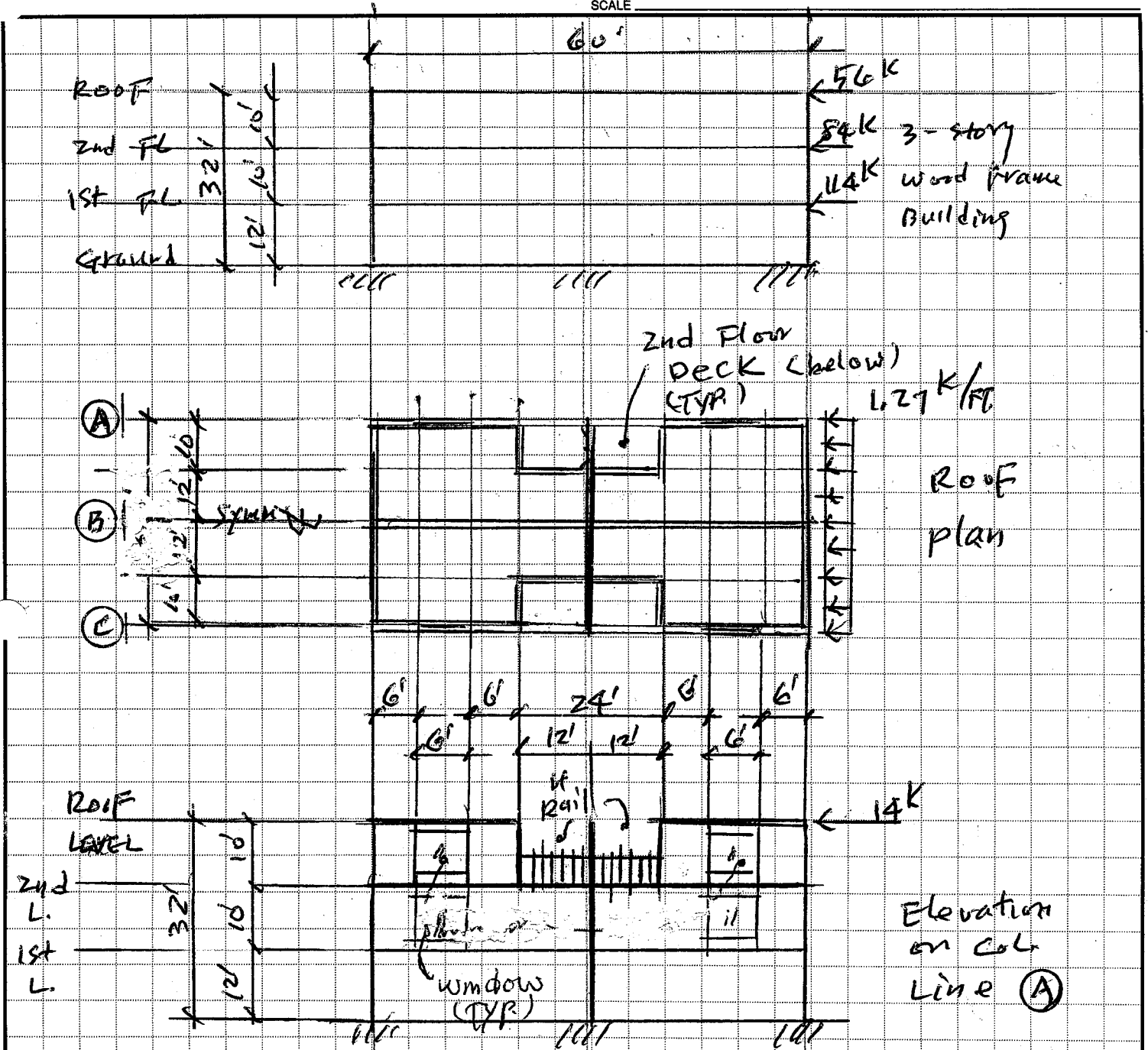


John LIAO

(Continued on the next two pages)



SCALE \_\_\_\_\_



CALCULATION

Ⓒ Roof Level

$$56K / 44 = 1.27 K/FT$$

$$1.27 \times 22 / 2 = 1397 \approx 14K$$

UNIT SHEAR IN SHEAR PANELS:

$$V = 14 / (6 + 6 + 6 + 6) = 0.583 K/ft$$

USE TYPE Ⓑ  $V_a = 760 P/LF$   $7581 P/LF$

OR TYPE Ⓔ  $V_a = 640 P/LF$   $586 P/LF$

o window  
 # 42" High Handrail.

## ALLOWABLE LATERAL SHEARS FOR VERTICAL SHEAR PANELS

- A** 7/16" CDX plywood with 8d nails @ 4" o.c. at edges and 12" o.c. field, penetrated in framing 1 1/2", with stud spacing equal to 16", face grain running across studs, and applied direct to framing. Framing members receiving edge nails from abutting panels shall be 3x or wider with nails staggered ----- 380 plf
- B** Same as Type A except panels shall be applied on both sides ----- 760 plf ←
- C** 7/16" CDX plywood with 8d nails @ 3" o.c. at edges and 12" o.c. field, penetrated in framing 1 1/2", with stud spacing equal to 16", face grain running across studs, and applied direct to framing. Framing members receiving edge nails from abutting panels shall be 3x or wider. with nails staggered. ----- 490 plf
- D** Same as Type C except panels shall be applied on both sides ----- 980 plf
- E** 7/16" CDX plywood with 8d nails @ 2" o.c., at edges and 12" o.c. field, penetrated in framing 1 1/2", with stud spacing equal to 16", face grain running across studs and applied direct to framing. Framing members receiving edge nails front abutting panels shall be 3x or wider. with nails staggered. ----- 640 plf ←
- F** Same as Type E except panels shall be applied on both sides. ----- 1280 plf
- G** 19/32" CDX plywood with 10d nails @ 4" o.c., at edges and 12" o.c. field, penetrated in framing 1 5/8", with stud spacing equal to 16", face grain running across studs and applied direct to framing. Framing members receiving edge nails from abutting panels shall be 3x or wider. with nails staggered. ----- 510 plf
- H** Same as Type G except panels shall be applied on both sides. ----- 1020 plf
- L** 19/32" CDX plywood with 10d nails @ 2" o.c., at edges and 12" o.c. field, penetrated in framing 1 5/8", with stud spacing equal to 16", face grain running across studs and applied direct to framing. Framing members receiving edge nails from abutting panels shall be 3x or wider with nails staggered. ----- 870 plf
- M** Same as Type L except panels shall be applied on both sides. ----- 1740 plf
- N** 7/16" Structural I plywood with 8d nails @ 2" o.c., at edges and 12" o.c. field, penetrated in framing 1 1/2", with stud spacing equal to 16", face grain running across studs and applied direct to framing. Framing members receiving edge nails from abutting panel edges shall be 3x or wider with nails staggered. ----- 732 plf
- P** Same as Type N except panels shall be applied on both sides ----- 1464 plf
- Q** 7/16" CDX plywood with 8d nails @ 6" o.c. at edges and 12" o.c. field, penetrated in framing 1 1/2", with stud spacing equal to 16", face grain running across studs, and applied direct to framing. ----- 240 plf

NOTE: 1. All plywood panels may be replaced by OSB panels if strength and durability are equal or better.  
 2. The edges of all plywood panels (any type) shall be supported w/ 2x or wider framing members.





Tri-Counties Dinner Meeting
Wednesday, April 22, 2015

It Ain't What it Used to Be: The Completely Reorganized ACI 318-14 Concrete Code

You open your new copy of ACI 318-14, and quickly find out that your favorite provisions are somewhere else: they simply are not where they used to be. Chapter names are different, and the style of the language has changed too. The 2014 edition of the ACI 318 Building Code Requirements for Structural Concrete is completely reorganized, front to back, outside and inside, as compared to the 2011 edition. Find out why this was done, and learn how the new organizational structure is intended to function. Substantive technical changes will not be readily apparent because of all of the other changes, so this presentation will point out a few of them. ACI has made available some resources to assist you with navigating the 2014 edition, and these will be briefly reviewed.

Conrad Paulson, S.E., P.E.

Conrad Paulson is a Principal in Structural Engineering with the Los Angeles (Pasadena) office of Wiss, Janney, Elstner Associates (WJE). He is a voting member of two subcommittees of ACI 318, and is also a voting member of two subcommittees of the AISC Committee on Specifications. He has been employed at WJE for the past 32 years, and after spending 30 years in Chicago, relocated to Southern California.

Location: Glen Annie Golf Club, 405 Glen Annie Road, Santa Barbara, CA 93117

Time: Registration and Networking Happy Hour: 5:30pm, Dinner: 6:30pm, Program: 7:15pm - 8:30pm

Cost: Member \$35, Students: \$25, Walk-ins \$45, Table of 8: \$245

Please inform SEAOSC in advance if you prefer a vegetarian entree.

Reservations: Make advance reservations via SEAOSC.org, fax or email by April 20.

Prepay by providing your credit card number & expiration date. "Walk-ins" welcome.

TRI-COUNTIES DINNER MEETING RESERVATION FORM: April 22, 2015

Please print legibly!



Attendee(s): \_\_\_ @ \$35 = \$\_\_\_

Students: \_\_\_ @ \$25 = \$\_\_\_

Table of 8: \_\_\_ @ \$245 = \$\_\_\_

# of Vegetarian Entrees Requested: \_\_\_

TOTAL = \$\_\_\_

Name(s): \_\_\_\_\_

Firm: \_\_\_\_\_ Phone: \_\_\_\_\_ Email: \_\_\_\_\_

Card number: \_\_\_\_\_ Expiration date: \_\_\_\_\_

Signature: \_\_\_\_\_ Zip Code: \_\_\_\_\_

Billing Address: \_\_\_\_\_



Structural Engineers Association  
of Southern California

## Webinar: The New ASTM A1085 Specification: A New Dynamic for HSS *Wednesday, April 29, 2015*

---

With the adoption of the new ASTM A1085 specification in early 2013, Hollow Structural Sections (HSS) produced to a higher standard are now available. This new manufacturing standard raises the bar on the performance of HSS used in structures subjected to seismic and fatigue related loads. With tighter material tolerances, a higher minimum yield stress, a required Charpy V-Notch test, and cap on the minimum yield stress, this new specification makes designing with HSS easier and more economical, especially for buildings and bridges subjected to fatigue and seismic loads. This session will cover the history and development of the new spec and show how economical HSS can be through design examples.

Following this session, attendees will:

- Gain awareness of ASTM A1085 and how it differs from ASTM A500
  - Understand the design opportunities the specification provides, especially in seismic applications
    - Design example and discussion of material availability
    - Know where to find additional resources on A1085
- 



**Brad Fletcher, S.E.**, is the senior sales engineer at Atlas Tube. In this role, Brad leverages his 20 years of experience in engineering design and the steel industry to provide technical expertise on the use of steel hollow structural sections (HSS) and pipe piling products to design engineers, detailers, fabricators and architects.

A registered structural engineer in the state of Illinois, Brad has held senior positions at leading architecture and engineering firms, Skidmore, Owings & Merrill; Sargent & Lundy; and Halvorson and Partners. For the past eight years, most recently while working at Tata Steel (formerly known as Corus) and now with Atlas Tube, Brad has focused his efforts on serving as a liaison between structural designers and the steel industry.

**Time:** 12:00pm-1:00pm

**Cost:** SEAOSC Members: \$75, Nonmembers: \$150, Members of any SEA \$100

### **View Full Details and To Register Online:**

1. SEAOSC Members: Login with your username & password to access the member discount.
2. Everyone: Visit [seaosc.org/events](http://seaosc.org/events) to register.

*Notes, if available, will be available to download after registration using the link provided.*



Together CCC ICC & SEAOSC Present:

**International Building Code Essentials for  
Wood Construction**

**&**

**Seismic & Wind Design Considerations for Wood Framed  
Structures**

By Michelle Kam-Biron, PE, SE, SECB  
Director of Education, American Wood Council

April 30, 2015

8:00 am—12:00 pm

San Luis Obispo County

Community Room

995 Palm Street

Questions?

Call Bryan Spain, 805-792-1109

AWC is an ICC approved preferred provider

**3.5 CEU's**

CCICC & SEAOSC

Member Cost: \$35

Non Member Cost: \$50

Register Via Pay Pal at:

Centralcoasticc.com

Or by Mail:

City of Paso Robles

Attn: Lori Wilson

1000 Spring Street

Paso Robles, CA 93446

(make check payable to CCC ICC)



# Welding Engineering – Duane K. Miller, Sc.D., P.E.

May 1, 2015 8:00 a.m. - 5:00 p.m.

Gold Coast Hotel ■ 4000 W. Flamingo Rd. ■ Las Vegas NV 89103

## PRESENTATION SYNOPSIS

Welded connections are an essential part of today's steel structures and yet many Structural Engineers have received little or no training on this important topic. This one-day seminar will serve as a primer on welded connections, covering topics from the fundamentals to advanced subjects. The presentation will cover:

- **Basics of Welded Connections**

This session will consist of a review of applicable welding codes, the basics of welded joints and weld types, and required weld metal strength levels. Details for welded connection details will be discussed, including the basic criteria to be used to determine weld throat dimensions.

- **Principles of Welded Connection Design**

Twelve design-related principles that should be considered when welded connections are designed and detailed. The principles are discussed and then illustrated with examples of connections that comply and do not comply with the concepts.

- **Welding of Seismically Resistant Connections**

The requirements of the AWS D1.8 Seismic Welding Supplement are reviewed with a specific focus on the requirements that must be specified by the Engineer, what compliance to these requirements looks like, and why such provisions are in the Code.

- **Special Welding Applications**

There are a variety of "standard" special welding applications that are encountered in by Structural Engineers that often create perplexing challenges. Practical solutions to a dozen routine problems are presented, including some "field fixes" to problems that are frequently experienced.

## ABOUT THE SPEAKER

**Duane K. Miller, Sc.D., P.E.** is a recognized authority on the design and performance of welded connections. He is a popular speaker on the subject and has lectured around the world. Dr. Miller publishes frequently and on three occasions, has been awarded the Silver Quill Award of the American Welding Society (AWS) for the excellence of his published work. In 2001, he received the American Institute of Steel Construction's T. R. Higgins Lectureship Award, which annually recognizes an outstanding lecturer and author whose technical papers are considered an outstanding contribution to the engineering literature. In 2005, he received AISC's Lifetime Achievement Award and in 2013, the George E Willis award from the AWS for his work in advancing welding internationally. He has authored and co-authored chapters of many texts, including the AISC Design Guide on Welding and the Mark's Handbook of Engineering, 11th Edition. He has appeared as a subject expert on the History Channel and Discovery Channel.

Dr. Miller earned a B.S. degree in Welding Engineering from LeTourneau University in Longview, Texas, an M.S. in Materials Engineering from the University of Wisconsin - Milwaukee, and was awarded an honorary Doctor of Science degree from LeTourneau University in 1997. He is the immediate past Chair of the AWS D1 Structural Welding Code Committee. He was the first Chair of the Seismic Welding Subcommittee and is a former co-chair of the AASHTO-AWS D1.5 Bridge Welding Code Committee, a current member of the AISC Specification Committee, a Professional Engineer, Certified Welding Inspector and Qualified Welder.

## REGISTRATION FEES

Registration fee includes presentation, continental breakfast, lunch, refreshment breaks, and seminar handouts. **SEASoN is extending membership rates to individuals who are members of other state Structural Engineering Associations and to AWS members. Deadline to register is Monday, April 27, 2015.**

SEASoN/SEA Member	\$225	<i>SEASOSC Members Receive</i>
Non Member	\$325	<i>SEASoN Member Rate!</i>

## CANCELLATION POLICY

You have until noon on Wednesday, April 29, 2015 to cancel your registration and receive a refund less a \$50 processing fee. Substitutions from within the same company will be accepted.

## PROFESIONAL DEVELOPMENT HOURS

A certificate for 8.0 Professional Development Hours will be issued at the conclusion of the seminar.

## REGISTER ON-LINE

If you would like to pay by credit card you must register on-line. Please click on the link below to be taken to the on-line registration form.

[Register On-Line](#)

## REGISTRATION FORM

\_\_\_\_\_  
Company

\_\_\_\_\_  
Address

\_\_\_\_\_  
Phone

\_\_\_\_\_  
Fax

\_\_\_\_\_  
Name

\_\_\_\_\_  
Email

\_\_\_\_\_  
Name

\_\_\_\_\_  
Email

**Member of AWS or Structural Engineers State Association** - Circle One:

**AWS NV CA AZ UT CO NM Other**\_\_\_\_\_

**If you fax or email your registration, it will not be confirmed until your payment is received.** A confirmation email will be sent to each attendee once payment is received. Please make checks payable to: **SEASoN.**

Mail payment and registration form to:

**SEASoN**  
**P.O. Box 35081**  
**Las Vegas NV 89133**  
**Fax: 702-656-4981**  
**Email: [seasonlv@earthlink.net](mailto:seasonlv@earthlink.net)**

If you have questions about the seminar please call Dawn Miller at 702-203-7817 or email her at [seasonlv@earthlink.net](mailto:seasonlv@earthlink.net)



# Joint SEAOSC-ACI LA Dinner Meeting

Wednesday, May 6, 2015

## “Bringing Grade 100 Reinforcement into the ACI 318 Code”



### Part 1: The ATC-115 Roadmap

by Mark Perniconi, Executive Director, Charles Pankow Foundation

The Charles Pankow Foundation has completed a major research initiative titled *Roadmap for the Use of High-Strength Reinforcement in Reinforced Concrete Design*, which was managed by the Applied Technology Council and has been given the working title of the “ATC-115 Project.” The result is a detailed roadmap that specifically identifies the technical support required to effect updates of ACI 318 to allow the general use of reinforcing steel bars beyond Grade 60. The project identified the steps necessary to technically update the ACI 318 Code to allow for the use of steel reinforcement bar with yield strength up to 100 ksi, including ductile Grades 80 and 100 for seismic applications, as is now being produced at the current state-of-the-art technology for steelmaking.



### Part 2: Fy=100 ksi: Not Just “Plug and Play” into ACI 318

By Conrad Paulson, Principal, Wiss, Janney, Elstner Associates, Inc.

The integration of Grade 100 reinforcement into the ACI 318 Code will not be a simple process. The current general limit of 80 ksi on maximum specified yield strength is not simply driven by reinforcement in tension, but also addresses concerns about strain compatibility in compression and serviceability performance of members in shear and torsion, among others. This part of the presentation examines likely applications where use of Grade 100 reinforcement might be beneficial, while at the same time pointing out some limitations and current concerns not yet addressed by available research. Also included will be a “snapshot” of the likely tensile properties for ductile Grade 100 reinforcement.

**Location:** Luminarias, 3500 Ramona Blvd., Monterey Park, CA 91754

**Time:** Registration and Networking: 5:30pm, Dinner: 6:00pm, Program: 7:15pm-8:30pm

**Cost:** Member \$35, Students: \$25, Walk-ins \$45, Table of 8 \$245

Please inform SEAOSC in advance if you prefer a vegetarian entree.

Reservations: Make advance reservations via SEAOSC.org, fax or email by May 4th.

Prepay by providing your credit card number & expiration date. “Walk-ins” welcome.

---

### LA DINNER MEETING RESERVATION FORM: May 6, 2015

Please print legibly!



Attendee(s): \_\_\_\_\_ @ \$35 = \$ \_\_\_\_\_

Students: \_\_\_\_\_ @ \$25 = \$ \_\_\_\_\_

Table of 8: \_\_\_\_\_ @ \$245 = \$ \_\_\_\_\_

# of Vegetarian Entrees Requested: \_\_\_\_\_

**TOTAL = \$ \_\_\_\_\_**

Name(s): \_\_\_\_\_

Firm: \_\_\_\_\_ Phone: \_\_\_\_\_ Email: \_\_\_\_\_

Card number: \_\_\_\_\_ Expiration date: \_\_\_\_\_

Signature: \_\_\_\_\_ Zip Code: \_\_\_\_\_

Billing Address: \_\_\_\_\_



# CONFERENCE ANNOUNCEMENT

## TOWARDS MORE RESILIENT CITIES

**Space is limited. Early registration is highly recommended.**

**FIFTH FLOOR CONFERENCE FACILITIES  
FEDERAL RESERVE BANK OF LOS ANGELES  
950 SOUTH GRAND AVENUE AT OLYMPIC BOULEVARD  
LOS ANGELES, CALIFORNIA**

**Convenient pay parking is available south of the building on the Olympic Boulevard**

**FRIDAY, MAY 8, 2015  
8:00AM TO 5:30 PM**

The 2014 LATBSDC conference will cover a variety of topics related to recent advances in structural design of tall and special buildings. Distinguished speakers will present topics ranging from the new Los Angeles Resiliency Plan, to various seismic rating systems; new tools developed for performance-based design; ATC project updates, modeling and performance of structural walls, ground motion issues for tall buildings, and design and performance of dual systems. In addition, a panel discussion will be held and an update will be provided on planned improvements to the 2014 LATBSDC Design Criteria.

=====REGISTRATION FORM=====

### ADVANCES IN STRUCTURAL DESIGN FOR SEISMIC REGIONS

**MAY 8, 2015**

Name \_\_\_\_\_

Firm or School \_\_\_\_\_

Address \_\_\_\_\_

City, State, Zip, Country \_\_\_\_\_

Phone \_\_\_\_\_ Fax \_\_\_\_\_ E-mail \_\_\_\_\_

Early-Bird Registration Fee (if received by April 20, 2015).....	\$250
Registration Fee (if received after April 20, 2015).....	\$300
Students (space is limited to 30 student participants).....	\$ 40

It is possible to register at the door, but late registrants may not receive a copy of the Proceedings at the conference; late registrants may receive a copy of the proceedings mailed to them after the Conference. Please pay by check in U.S. currency; the Council is unable to accept credit cards or purchase orders for payment. Company checks for multiple registrations must include the name of each person being registered.

Make checks payable to: Los Angeles Tall Buildings Structural Design Council  
c/o John A. Martin & Associates, Inc.  
950 S. Grand Avenue, 4<sup>th</sup> Floor  
Los Angeles, California 90015  
Tel.: (213) 483-6490; Fax: (213) 483-3084  
Internet Address: <http://www.tallbuildings.org>  
E-mail Address: [PHamabata@johnmartin.com](mailto:PHamabata@johnmartin.com)



A meeting co-sponsored by the Pacific Earthquake Engineering Research Center



# Spring Education Programs

## Fri. & Sat., May 15 & 16 2015

**Attend Friday:** \$75 (Member) or \$135 (Non-Member)  
**Attend Saturday:** \$225 (Member) or \$450 (Non-Member)  
**Attend Both Days:** \$285 (Member) or \$550 (Non-Member) **Best Value!**

\*\*Students with valid ID receive 50% discount off Member price\*\*  
Members of SEAOSD received the Member price for either session.

**PDH CREDITS OFFERED!**

### Session 1 (Friday, May 15)

- **Safety Assessment Program (SAP) Training (Lisa Shusto, SE & Jon Wren of CalOES)** \*\*see additional flyer for more details!\*\*

### Session 2 (Saturday, May 16)

- **Evaluation of Steel Panel Zone Stiffness Using Equivalent End Zones (Behzad Rafezy, PhD of SidePlate Systems)**
- **AISC Chapter N – Quality Control and Quality Assurance (Lorena Arce, PE of AISC)**
- **Curtain Wall Retrofit Design for Blast Loads (Joseph Valancius, SE of Karagozian & Case)**
- **FRP Strengthening of an Existing Concrete Shear Wall Building (Chris Smith, SE of Englekirk & Sarah Witt, LEED AP of Contech Services)**

### Westside Conference Center, Pepperdine University

West LA Graduate Campus, 6100 Center Drive, Suite 200, Los Angeles, CA 90045  
Free Wi-Fi and floor electrical outlets. \$5 Self Parking. Continental breakfast, lunch buffet and refreshments provided.

Visit [www.seaosd.org](http://www.seaosd.org) for additional program details. Please return form with payment via email: [seaosd@seaosd.org](mailto:seaosd@seaosd.org), fax: 562-692-3425, or mail: 1105 S. Euclid St. #D409, Fullerton, CA 92832. Please make checks payable to "SEAOSC". 20% late fee applies beginning after midnight May 8, 2015 and will be added to total if omitted below. Cancellations refundable until midnight May 8, 2015.

## SPRING EDUCATION PROGRAMS REGISTRATION

Please print legibly!

Contact/Attendee Name(s): \_\_\_\_\_

Firm: \_\_\_\_\_

Phone: \_\_\_\_\_ Email: \_\_\_\_\_

Please indicate sessions attending:  
Session 1: Friday  
Session 2: Saturday  
Are you a SEAOSD Member? Yes

	Member	Non-Member	Student
<b>Attend Friday Session:</b>	_____ @ \$75	_____ @ \$135	_____ @ \$37.50
<b>Attend Saturday Session:</b>	_____ @ \$225	_____ @ \$450	_____ @ \$112.50
<b>Attend Both Sessions:</b>	_____ @ \$285	_____ @ \$550	_____ @ \$142.50

After midnight May 8 add 20% = \$ \_\_\_\_\_

TOTAL= \$ \_\_\_\_\_

Card number: \_\_\_\_\_ Expiration date: \_\_\_\_\_

Signature: \_\_\_\_\_ Pin (last 3-4 digits on back of card): \_\_\_\_\_

Address where you receive your credit card bill: \_\_\_\_\_ Zip Code: \_\_\_\_\_

# Past Presidents', Awards & Spouses' Night

## Plus Installation of 2015 Officers



Los Angeles Dinner Meeting  
Wednesday, **June 3, 2015**

***Come meet and show your support for  
your Association's hard-working volunteers!  
See the winners of the Excellence In Engineering Awards!***



**Luminarias Restaurant**, 3500 Ramona Dr., Monterey Park

**5:30 pm - Networking Time**

**6:30 pm - Dinner**

**7:30 pm - Program**

**\$35**; Full-Time Students - \$25; Table of 8 - \$245; Walk-ins - \$45

Make advance reservations before Friday, May 29 at

[www.seaosc.org](http://www.seaosc.org), by fax (562-692-3425), or by email ([seaosc@seaosc.org](mailto:seaosc@seaosc.org)).

Prepay by providing your credit card number and expiration date to avoid waiting at the door.

SEAOSC is charged for "no-shows", so please notify office by deadline if you must cancel.

---

**LOS ANGELES DINNER RESERVATION FORM: June 3, 2015**

Reservations Due Before May 29, 2015

Your Name: \_\_\_\_\_ Phone: \_\_\_\_\_

General: \_\_\_\_ @ \$35 =\$ \_\_\_\_\_

Students: \_\_\_\_ @ \$25 =\$ \_\_\_\_\_

Guests' Name(s): \_\_\_\_\_ Table of 8: \_\_\_\_ @ \$245 =\$ \_\_\_\_\_

Your email: \_\_\_\_\_

Past Presidents: FREE! Thank you!

TOTAL: =\$ \_\_\_\_\_

Credit Card Number: \_\_\_\_\_ Expiration Date: \_\_\_\_\_

Zipcode of Billing Address: \_\_\_\_\_ CVV (Last 3-4 digits on back of card): \_\_\_\_\_

Signature: \_\_\_\_\_



# **SAVE THE DATE**

## **2015 SEAOSC GOLF TOURNAMENT**



### **FRIENDLY HILLS COUNTRY CLUB**

**8500 South Villaverde Drive  
Whittier, California 90605  
(562) 698-0331**

**MONDAY  
AUGUST 24, 2015**

**GOLF AWARDS and PRIZES  
ON COURSE CHALLENGES  
PUTTING CONTEST  
RAFFLE  
LUNCH and DINNER**

**DON'T MISS OUT ON A DAY OF GREAT FUN! SIGN UP COMING SOON!**

**Questions? Please contact either:**

**Golf Tournament Chairman:**

**Kevin O'Connell**

**kdoconnell@sgh.com**

**Executive Director:**

**Lynn Hanger**

**562-908-6131**

**seaosc@seaosc.org**

**SPONSORSHIP OPPORTUNITIES AVAILABLE. INFORMATION COMING SOON!**

# CLASSIFIED ADVERTISEMENTS

**Holmes Culley** is actively seeking Senior Engineers and Project Managers for our new Los Angeles office. This is an excellent, ground-floor opportunity for a self-motivated individual to grow into a management position and help develop our Los Angeles office. Visit [www.holmesculley.com](http://www.holmesculley.com) and send your resume with cover letter to [hr@holmesculley.com](mailto:hr@holmesculley.com).

Provide technical leadership to structural engineers, drafters, and administrative support to ensure the accurate and timely completion of projects.

Oversee the design and construction of projects, review and approval of documentation, including drawings and reports.

Technical project planning for complex projects, including interactions with clients, architects and contractors, for all aspects of the project, including concept, planning, and design to project completion.

Establish and monitor schedules and budgets as they relate to assigned projects.

Develop new project opportunities with new and existing clients.

Have a M.S. in Structural Engineering, and a minimum of 6 years of related experience; Possess a valid PE license; SE license is also a plus.

Your work will be diverse, design based, client facing and include all aspects of a "consulting" service. You will be involved with assessing, strengthening and retrofitting existing buildings as well as designing new structures.

## Spire Structural Engineering Inc., Lake Forest, CA

We are a young and growing company positioned for future success. Over the past decade, we have delivered the highest quality design and service to our clients. Our diverse projects utilize all materials, and we work in multiple sectors:

Healthcare	Equipment/anchorage
Schools	Seismic retrofit
Commercial	Landscape/site features
Retail	Forensic/evaluation
Industrial	Sports venues
Restaurants	Tenant improvements
Residential	Change of use/reuse

We seek team members who share our values, take pride in their work and want to grow professionally with us. Positions are available for both P.E. and S.E. candidates. Only those who are efficient, reliable and detail-oriented need apply. Communication and leadership/management skills are essential and DSA/OSHPD experience is a plus.

Please send resume/cover letter to Jeremy Welton at [jwelton@spirestructures.com](mailto:jwelton@spirestructures.com)

## JCE STRUCTURAL ENGINEERING GROUP, INC.

### Project Manager/Project Engineer/Structural Designer/Revit Draftsman

We are seeking highly technical & motivated individuals. Great opportunities for growth & advancement in career. Positions are available for engineers with 5+ years of experience. Projects include Seismic Retrofit and new Construction of Buildings. These projects include: New Construction of Schools, Colleges, Universities, Hospitals, High-Rise Buildings, etc. Our Seismic Retrofit projects include the use of Performance Base Design. E-mail Cover Letter and Resume to: [jceinfo@jcesegroup.com](mailto:jceinfo@jcesegroup.com)

#### Desired Qualifications:

MS degree in Civil Engineering with a Structural emphasis. CA P.E. Minimum / S.E. Preferred  
Strong Seismic Engineering background.  
Strong analytical skills & experience in Structural Engineering Software, including ETABS, SAP, RAM, etc.  
Excellent written, verbal communication skills, teamwork skills and self motivation.  
Ability to work on multiple and variety of projects.  
Project Management Experience  
OSHPD, DSA, Revit experience is a plus.

## MHP STRUCTURAL ENGINEERS – Long Beach

MHP has immediate openings for exceptional engineers in our office near the Long Beach Airport. MHP provides high quality design, seismic retrofit and seismic consulting services to architects, developers, contractors and owners. We design, evaluate and strengthen buildings in the Commercial, Education, Multi-Family Residential and Healthcare sectors. MHP offers full benefits within a challenging and rewarding professional environment.

### DESIGN and PROJECT ENGINEERS

REQUIRED QUALIFICATIONS: BSCE and 2 years minimum experience in structural design and seismic retrofit of *commercial buildings*. Preferred Qualifications include MS in Structural Engineering; PE or SE license; strong 3D computer modeling skills; working knowledge and experience using ASCE 41 performance-based code; OSHPD and DSA experience; familiarity with Revit. Experience with non-linear pushover and time-history modeling, viscous dampers and BRBF's a plus.

### STRUCTURAL DUE-DILIGENCE ENGINEER

REQUIRED QUALIFICATIONS: BSCE and 2 years minimum experience in structural design and seismic retrofit of *commercial buildings* including one-year minimum evaluating existing buildings and providing loss estimates (SEL/SUL). PE or SE license REQUIRED. Preferred Qualifications include MS in Structural Engineering and willingness to travel. Additional due-diligence experience a plus.

Please do not respond if Required Qualifications are not met. EOE. Send resume to [careers@mhpse.com](mailto:careers@mhpse.com). Learn more about MHP at [www.mhpse.com](http://www.mhpse.com). No Phone calls please.

# BOARD OF DIRECTORS

July 1, 2014 - June 30, 2015

*The SEAOSC Board of Directors works on the behalf of our membership. If there are general or specific items you would like to see the Board of Directors address or discuss please contact any of the SEAOSC Board members.*

## President

Kevin O'Connell  
kdoconnell@sgh.com  
213-271-1934

## President-Elect

Michelle Kam-Biron  
mkambiron@awc.org  
805-410-2877

## Treasurer

Jeff Ellis  
jellis@strongtie.com  
714-738-2029

## Immediate Past President

Doug Thompson  
doug@stbse.com  
949-599-0320

## Directors

Colin Kumabe  
colin.kumabe@lacity.org  
213-482-0447

Ken O'Dell  
kodell@mhpse.com  
562-985-3200

James Parker  
jcparker@sgh.com  
949-930-2157

Kelsey Parolini  
kelsey@smithstructural.com  
805-439-2110

Edgar Plazola  
eplazola@insight-se.com  
310-640-0123

Ryan Smith  
rsmith@sideplate.com  
949-305-7889

Joseph Valancius  
valancius@kcse.com  
818-303-1300

Paul Van Benschoten  
vanbenschoten@coffman.com  
818-285-2650

## SEAOSC Executive Director

Lynn Hanger  
seaosc@seaosc.org  
562-908-6131

Get involved! Members are invited to join a SEAOSC committee. Please contact the chairperson for information on current projects and meeting times, dates and locations.

# COMMITTEE LEADERS

Committees	*Board Contact Chair(s)	Phone	Email
Membership	Kelsey Parolini* Nolan Lenahan	805-439-2110 310-857-5342	kelsey@smithstructural.com nlenahan@dlrgroup.com
Younger Members	Ryan Smith* Preston Nirattisai Nathan Jo	949-305-7889 818-273-9980 818-441-8014	rsmith@sideplate.com preston@safetyfactorzero.com nsjo@csupomona.edu
Image & Public Relations	Ken O'Dell* Marcela Opie Samuel Mengelkoch	562-985-3200 949-494-0776 310-323-9924	kodell@mhpse.com marcela@lawsonburke.com smengelkoch@structuralfocus.com
Technology	Lynn Hanger* Casey Hemmatyar	562-908-6131 888-889-5643	seaosc@seaosc.org ckh@psfeg.com
Education	Michelle Kam-Biron* Tim Kaucher Rachel Gutmann Tim Kaucher	805-410-2877 714-738-2151 818-285-2650 714-738-2151	mkambiron@awc.org tkaucher@strongtie.com gutmann@coffman.com tkaucher@strongtie.com
Sub Cmte: Webinars	Tim Kaucher	714-738-2151	tkaucher@strongtie.com
Professional Bus. Practices	Ryan Smith*	949-305-7889	rsmith@sideplate.com
Building Codes & Stds.	Doug Thompson* Carl Sramek	949-599-0320 562-799-6010	doug@stbse.com sramekca@aol.com
Seismology	Colin Kumabe* Jesse Karns Doug Thompson Ashi Dhalwala	213-482-0447 562-964-7962 949-599-0320 310-828-1422	colin.kumabe@lacity.org jkarns@sideplate.com doug@stbse.com ceginc1@yahoo.com
Sub Cmte: Research	Doug Thompson	949-599-0320	doug@stbse.com
Sub Cmte: Steel Bldgs.	Ashi Dhalwala	310-828-1422	ceginc1@yahoo.com
Existing Buildings	Edgar Plazola* Daniel Zepeda	310-640-0123 213-596-5000	eplazola@insight-se.com dzepeda@degenkolb.com
Disaster Emergency Svcs.	Joseph Valancius* Doug Litchfield	818-240-1919 818-913-3558	valancius@kcse.com dlitchfield@mwdh2o.com
Quality Assurance	Jeff Ellis*	714-738-2029	jellis@strongtie.com
Legislative	Kevin O'Connell*	213-271-1934	kdoconnell@sgh.com
Sustainable Design	Paul Van Benschoten*	818-285-2650	vanbenschoten@coffman.com

